

Environmental Report

Report for:

Bosbury & Catley Neighbourhood Area

April 2018



Bosbury Environmental Report

Contents

Non-technical summary

- 1.0 Introduction
- 2.0 Methodology
- 3.0 The SEA Framework
- 4.0 Appraisal of Objectives
- 5.0 Appraisal of Options
- 6.0 Appraisal of Policies
- 7.0 Implementation and monitoring
- 8.0 Next steps

Appendix 1: Initial SEA Screening Report

Appendix 2: SEA Scoping Report incorporating Tasks A1, A2, A3 and A4

Appendix 3: Consultation responses from Natural England and English Heritage

Appendix 4: SEA Stage B incorporating Tasks B1, B2, B3 and B4

Appendix 5: Options Considered

Appendix 6: Environmental Report checklist

Appendix 7: Feedback of Draft Environmental Report consultation (D1)

Appendix 8: Screening of amended policies (D3)

Non-technical summary

The main objective of the SEA is to ensure that the environment is protected and consider the environmental concerns into the run up of preparing neighbourhood plans. Bosbury is in east Herefordshire and lies 12 miles east of Hereford and 4 miles north east of the market town of Ledbury. This group parish of Bosbury and Coddington has an overall population of 888 residents in over 350 properties, and the majority of these properties can be found in its two major settlements of Bosbury and Coddington. The Bosbury Neighbourhood Area does not include the whole parish and only includes the area around Bosbury and Catley. The River Leadon and its tributaries run through the centre of Bosbury village and surrounding countryside and are both prone to flooding, and have been assigned a planning support officer from Herefordshire Council.

Bosbury NDP covers seven objectives housing, sustaining and improving local facilities, strengthening and supporting local economic activity, protect and enrich landscape, promote energy performance, prioritise local distinctiveness in change and growth and safeguarding green space and rural landscape. The NDP allocates a settlement boundary for development in line with growth indicated in the Core Strategy within the settlement boundary. The NDP objectives and baseline comply with the SEA European directive; objectives have been thoroughly tested throughout Stage B of the SEA process. No HRA screening is needed as Bosbury does not have any SAC sites within or nearby the parish.

The environmental appraisal of the Bosbury NDP has been undertaken in line with the Environmental Assessment of Plan and Programmes Regulations 2004. Stage A of the SEA process involved Scoping and Stage B provided a review and analysis of the NDP. Stage C involved preparing an Environmental Report and Stage D comprises a formal consultation on both this and the Draft Plan itself.

Most of the changes post regulations 14 within the NDP are minor word amendments, so no rescreening of policies or objectives have been carried out. During the time Bosbury was at regulation 14 the plan was considered to be in conformity with the pre submission Core Strategy and meet the required proportionate growth housing target. Post examination the Core Strategy the housing targets altered and Bosbury's plan did not make changes in light of the new housing target figures for regulation 16. Bosbury first began their first regulation 16 on the 14 May 2015 to 25 June 2015. The plan did not progress to examination as it failed to demonstrate how it would meet their housing target or explain the constraints which affected their proportionate growth target. In 2016 the steering group added a justification statement to explain the environmental constraints and re submitted their regulation 16 period which ran from 14 May to 25 June 2015. The plan was sent through to examination on 17 January 2017 and the Examiner's Report was received on the 16 March. The Parish decided to take on board some of the Examiner's comments but decided to significantly change the policies in the plan therefore the plan is required to go through regulation 16 and examination again.

The Bosbury NDP has been redrafted post examination and policies 1, 3, 5 and 6 have been significantly changed, and have been rescreened in the SEA assessment. Changes to the NDP have improved the plan making the document overall more positive and flexible. On the whole the NDP is in general conformity with both national planning policy contained in the National Planning Policy Framework and strategic policies set within the Herefordshire Local Plan (Core Strategy). Therefore, no further changes are recommended as a result of this SEA (stage D).

Habitat Regulations Assessment (HRA) screening does not need to be carried out as the Parish falls outside the catchment for the River Wye (including River Lugg), Wye Valley woodlands and is outside the 10km of Downton Gorge both of which are European sites (Special Area of Conservation). The HRA assesses the potential effects of the NDP on the River Wye SAC, Wye Valley Woodlands and Downton Gorge SAC.

Once made (adopted) by Herefordshire Council, the effects of the policies within the Bosbury NDP will be monitored annually via the Council's Annual Monitoring Report (AMR).

1.0 Introduction

- 1.1 This report forms the draft Strategic Environmental Assessment (SEA) of the Bosbury Neighbourhood Development Plan (NDP).
- 1.2 The Bosbury NDP does not propose four small site allocations, within the settlement boundary. Bosbury is identified within table 4.14 which is targeted for proportional levels of growth in Policy RA1 of the Herefordshire Local Plan (Core Strategy). The NDP will provide general policies for guiding future development across the parish as a whole and a settlement boundary to dictate where majority of development in the parish should go. Bosbury is environmentally constrained by flooding to the east, and conservation area for the main settlement of Bosbury.

Purpose of the SEA

- 1.3 SEA is a requirement of EC Directive 2001/42/EC (the SEA Directive) which requires the assessment of the effects of certain plans and programmes on the environment to ensure that the proposals in that plan or programme contribute to the achievement of sustainable development.
- 1.4 The Directive was transposed into domestic legislation through the Environmental Assessment of Plans and Programmes Regulations 2004 which applies to plans with significant environmental effects.
- 1.5 A screening opinion was carried out on the Bosbury NDP and it concluded that due to the range of environmental designations in and around the parish, there may be significant environmental effects and consequently an SEA would be required.

Bosbury Parish Neighbourhood Plan Context

- 1.6 Bosbury and Coddington group parish have two major settlements of Bosbury and Coddington. The Group population is approximately 888 living in 350 homes. 89% of these homes are located in Bosbury and 11% are in Coddington. The designated neighbourhood planning area has selected the village of Bosbury and its surrounding area and excludes the settlement of Coddington. Bosbury is situated in the Hope End ward, and is north of Ledbury. The River Leadon runs through the central heart of the parish and is located west of the village. Due to the location of the river Leadon and its tributaries, the village and the surrounding countryside is susceptible to flooding. However flood improvement works have been carried out in the water courses.
- 1.7 The village is surrounded by fields and open countryside has many natural features such as views to the Malvern Hills east of the Parish. The village of Bosbury contains 29 listed buildings (mostly grade 2) within the existing settlement boundary; the centre area of the village is designated as a conservation area. To the east of the village consists of post war housing 'Forge Bank' estate and has a distinctly different character to the central part of the village.
- 1.8 There are 3 SSSIs around the parish and landscape features including settled farmlands; principle settled farmlands and ancient bordered farmlands. There is 1 conservation area within the centre of Bosbury village, 24 Special Wildlife sites across the group parish or on the border, two scheduled ancient monuments and numerous listed buildings.
- 1.9 The Bosbury Plan covers seven objectives covering different themes within the plan. These are divided up into housing, sustaining and improving local facilities, strengthening and supporting local economic activity, protect and enrich landscape, promote energy performance, prioritise local distinctiveness in change and growth and safeguarding green space and rural landscape.

1.10 The Bosbury Plan objectives are as follows:

- Deliver a housing growth strategy tailored to the needs and context of Bosbury village.
- Sustain and improve local facilities for existing and new residents.
- Strengthen and support economic activity.
- Only consider sensitive development which protects and enriches the landscape and built setting.
- Promote environmental energy performance thereby reducing carbon emissions.
- Prioritise local distinctiveness in every element of change and growth.
- Protect green-space and the rural landscape.

Context of Neighbourhood Plans

- 1.12 NDPs are a relatively new type of planning document that form a key part of the Government's localism agenda. They enable local communities to develop plans that reflect local aspirations, in accordance with strategic policies.
- 1.13 The Bosbury NDP must therefore conform to national planning policy set within the NPPF and strategic level local policy including the Herefordshire Local Plan (Core Strategy).
- 1.14 The Herefordshire Local Plan (Core Strategy) was adopted on the 16th October 2015.
- 1.15 Paragraph 216 of the NPPF and Planning Practice Guidance set out the weight that may be given to relevant policies in emerging plans, including NDPs, and indicated that weight may be given to relevant policies in emerging NDPs according to:
- The stage of preparation of the emerging plan (the more advanced the preparation, the greater the weight that may be given);
 - The extent to which there are unresolved objections to relevant policies (the less significant the unresolved objections, the greater the weight that may be given); and
 - The degree of consistency of the relevant policies in the emerging plan to the policies in this Framework (the closer the policies in the emerging plan to the policies in the Framework, the greater the weight that may be given).
- 1.16 This part of the NPPF is reinforced by Planning Practice Guidance published in March 2014, which is clear that an emerging NDP may be a material planning consideration once it has reached submission/local authorities publication stage (Regulation 16). This is reinforced by recent ministerial statements and case law (West Sussex), all of which have demonstrated that an emerging NDP may be a material consideration at the Regulation 16 stage¹.
- 1.17 Table 4.14 of the Local Plan (Core Strategy) lists Bosbury among the settlements which it considers among the settlements which it considers to be sustainable locations for proportional growth in line with the provisions of Policy RA2. This policy is expected to facilitate the delivery of 5,300 homes across the areas outside Hereford and the Market Towns in accordance with Policy RA1 and it anticipates that NDPs will be the principle mechanism for delivering growth in the rural areas.
- 1.18 Once made (adopted) by Herefordshire Council, the Bosbury NDP will have a role in guiding future development proposals within the Parish, by setting out policies against which planning applications will be determined.

¹ For the avoidance of doubt, this NDP is currently at the Draft Plan Stage (Regulation 14) and cannot, therefore, be given weight in reaching decisions on planning applications

Structure of SEA

1.19 The structure of the document is as follows:

- Section 2 – Explains the SEA methodology and summarises the comments received in respect of the SEA Scoping Report
- Section 3 - Introduces the Bosbury Neighbourhood Plan objectives and the SEA framework
- Section 4 - Appraises the objectives contained within the Neighbourhood Plan against the SEA framework
- Section 5 - Appraises the options considered within the Neighbourhood Plan against the SEA framework
- Section 6 – Appraises the policies contained within the Neighbourhood Plan against the SEA framework
- Section 7 – Discusses the implementation and monitoring of the Neighbourhood Plan
- Section 8 - Concludes the SEA report by outlining next steps

2.0 Methodology

2.1 The SEA process comprised several stages which are summarised, in some detail, below.

2.2 Stage A involved 4 tasks and culminated in a Scoping Report:

- *Task A1:* Identified and reviewed relevant policies, plans and programmes and environmental protection objectives from European, National and Local sources.
- *Task A2:* Collected baseline information to provide a picture of past, present and likely future conditions within the area. This helped to establish indicators which will be used to monitor the effects and performance of the Bosbury NDP.
- *Task A3:* Focused on the environmental issues identified from the baseline, highlighting key issues and problems within the neighbourhood area.
- *Task A4:* Used the information gathered from Tasks A1-A3 to develop a set of SEA objectives, sometimes referred to as the 'sustainability framework'.
- *Task A5:* Collated the results of Tasks A1-A4 within a Scoping Report, a document which was subject to a statutory 5 week consultation.

2.3 Stage B involved 4 tasks and assessed the effects of the NDP.

N.B. There is no evidence within the Draft NDP that alternative options were considered prior to launching in to the drafting of the plan and so it was impossible to undertake this element of the SEA.

- *Task B1:* Tested NDP Objectives against the SEA Objectives
- *Task B2:* Developed and refined the NDP policies.
- *Task B3/B4:* Predicted and evaluated the significant effects of the NDP

- 2.4 Stage C involved preparing an Environmental Report. This report presents information compiled during Stage B of the SEA process and constitutes the Draft Environmental Appraisal of the NDP. It accompanies the Draft Plan during its formal Regulation 14 consultation with people who live, work and carry out businesses in the neighbourhood area, as well as statutory bodies listed in the Neighbourhood Planning (General) Regulations 2012.
- 2.5 Producing an Environmental Report was therefore a legal requirement and the submission of this report to Herefordshire Council forms Stage D of the SEA process.

Scoping Report Consultation

- 2.6 With regard to the SEA scoping assessments, documents A1 to A4 were completed by a Herefordshire Council Planning Officer and sent to the Parish Council for comment, in readiness for a 5 week consultation with statutory bodies, pursuant to the Environmental Assessment of Plans and Programmes Regulations 2004.
- 2.7 After the document was approved by the Parish Council, the Bosbury SEA Scoping Report was available to four² statutory bodies for consultation from 8th September to 13th October 2014.

Consultation outcomes from Statutory Consultees

- 2.9 The consultation resulted in 2 responses, both of which are attached at Appendix 3.
- 2.10 Both responses were collated and incorporated within this document where relevant.

Natural England: commented on adding further plans, policies and programmes (please refer to appendix 3) to the A1 document. For the A2 section of the scoping report NE suggested to include NE internal information regarding priority habitats should be included within the baseline information in A2. NE stated that Soil and Geodiversity were not considered or covered in the A3 assessment and should be added to the baseline information. For the A4 assessment within particular objectives and topics landscape character assessment and Water framework directive should be included within the baseline.

Response: The six documents referred to have been added to A1 and further baseline data has been incorporated at A2.

English Heritage: Made general comments in relation to a range of Scoping Reports which were consulted on at the same time. English Heritage suggested that 'heritage assets' be defined and given greater coverage, as opposed to focusing solely on designated assets. Several changes to the wording of certain targets and indicators are suggested, too.

Response: Changes to the wording of relevant indicators and targets have been incorporated into A2 and A4.

Environment Agency: No comments received

Response: N/A

² Statutory consultation bodies: Natural England; English Heritage; Environment Agency, Natural Resources Wales

3.0 The SEA Framework

3.1 As mentioned previously, Stage A of the SEA identifies and reviews relevant policies, plans and programmes and environmental protection objectives from European, National and Local sources (refer to Table A1 in Appendix 2 for details of those documents that were reviewed in completing Stage A of SEA on the Bosbury NDP).

3.2 The requirement to undertake this 'context review' is contained in Annexes 1(a) and (e) of the SEA Directive which states that an Environmental Report should include:

"...an outline of the contents, main objectives of the plan or programme and relationship with other relevant plans and programmes" and

"...the environmental protection objectives, established at international, Community or Member State level, which are relevant to the plan or programme and the way those objectives and any environmental considerations have been taken into account during its preparation"

Policy context

3.3 The Bosbury NDP will deliver the Local Plan (Core Strategy) at parish level by adding locally specific detail to strategic policies. As a consequence, the Scoping Report for the NDP was based on the context review Herefordshire Council undertook for its Local Plan (Core Strategy).

3.4 The results of this assessment (context review) provide the source of the local baseline data and have been incorporated into the SEA framework. It should be noted that:

- No list of policies, plans and programmes can ever be exhaustive and that Herefordshire Council has selected those considered to be of particular relevance to the planning system;
- New or revised plans and policies can emerge during the SEA process

3.5 The following strategies and plans have been reviewed and, where appropriate, incorporated within the SA Framework objectives:

- *The EC Conservation of Habitats and Species Regulations (2010)* - These regulations transpose the Habitats Directive in England, Wales and to a limited extent Scotland by ensuring that activities are carried out in accordance with the Habitats Directive, which is to protect biodiversity through the conservation of natural habitats and species of wild flora and fauna.
- *The EC Water Framework Directive (2000)* - Commits all EU member states to achieve good qualitative and quantitative status of all water courses by 2015.
- *The Wildlife and Countryside Act (1981)* - The major legal instrument for wildlife protection in Britain, although other significant acts have been passed since. It has numerous parts and supplementary lists and schedules many of which have been amended since publication.
- *Biodiversity 2020: A strategy for England's wildlife and ecosystem services (2011)* - Forms part of the UK's Post-2010 Biodiversity Framework by setting out England's contribution towards the UK's commitments under the United Nations Convention of Biological Diversity.
- *The Countryside and Right of Way Act (2000)* - Creates a statutory right of access on foot to certain types of open land, to modernise the public rights of

way system, to strengthen nature conservation legislation, and to facilitate better management of AONBs

- *The Natural Environment and Rural Communities Act (2006)* - Designed to help achieve a rich and diverse natural environment and thriving rural communities through modernised and simplified arrangements for delivering Government policy.
- *Revised EU Sustainable Development strategy (2009)* - Sets out a single strategy on how the EU will more effectively meet its long-standing commitment to meet the challenges of sustainable development.
- *National Planning Policy Framework (NPPF) (2012)* - Consolidates the suite of PPG/PPS into one succinct planning policy document.
- *Planning Practice Guidance (2013)* - Sets out the vision, objectives and policies for the Herefordshire Local Plan (Core Strategy), which will guide development across the county up to 2031.
- *Herefordshire Local Transport Plan 3 (LTP) 2013-2015* - Sets out the Council's strategy for supporting economic growth, social inclusion and reducing the environmental impacts of transport, as well as the program of investment for the period April 2013 to April 2015.
- *Understanding Herefordshire Report (2014)* - Important to understand the place such as the local economy natural and built environment in which people live, learn and work as part of understanding their quality of life. Enable development for economy and housing to require levels and growth should be supported by sustainable transport measures.
- *Malvern Hills AONB Management Plan 2009-2014 (2009)* - Identifies the issues and challenges facing the special features of the area and contains 24 guiding principles and 46 strategic objectives which will help address them.
- *Wye Valley AONB management Plan 2009-2014 (2009)* - The Management Plan is the prime document which sets out the vision for the area and the priorities for its management.
- *Herefordshire Economic Development Strategy 2011-2016* - Aims to increase the economic wealth of Herefordshire by setting out proposals and to support business growth up to 2016.
- *Herefordshire Employment Land Study (2012)* - Includes employment land assessments for the plan period 2011-2031. The study includes Quantitative and Qualitative assessments of employment land, assessment of market demand and need, as well as providing forecasts and recommendations for future employment need over the plan period.
- *Herefordshire Strategic Housing Land Availability Assessment (SHLAA) (2009)* - The SHLAA aims to justify site allocations in plans by:
 - Identifying sites which are capable of delivering housing development
 - Assessing sites for their housing potential; and
 - Predicting when a site could be developed for housing.
- *Herefordshire Local Housing Market Assessment (LHMA) (2013)* - Builds on an earlier Strategic Housing Market Assessment (SHMA) developed for Herefordshire and Shropshire. Its purpose is to inform the Local Plan's policies regarding housing need and demand (for market and affordable housing) within

each of the 7 Housing Market Areas (HMAs) in Herefordshire between 2011 and 2031.

- *Herefordshire Local Housing Requirements Study (2012)* - Technical assessment of the housing market and potential future local housing requirements which supports planning policy regarding the amount of growth, housing tenure and housing type needed within Herefordshire up to 2031.
- *Herefordshire Rural Housing Background Report (2013)* - Provides the justification for the proportional housing growth targets outlined in the Core Strategy
- *Herefordshire Draft Gypsies and Travellers Assessment (2013)* - Assesses the accommodation needs of Gypsies and Travellers across Herefordshire.
- *Herefordshire Local Biodiversity Action Plan (2007)* - Focuses conservation efforts on the areas within Herefordshire that will result in the greatest benefit for ecological networks, habitats and species.
- *Building Biodiversity into the LDF (2009)* - Provides the Council's Local Plan (Core Strategy) with evidence in respect of biodiversity and geodiversity, identifying both opportunities and constraints across Herefordshire.
- *Herefordshire Green Infrastructure Strategy (2010)* - Develops a framework of natural and culturally important features and functions so that planning for a sustainable future is at the heart of planning within Herefordshire.
- *Renewable Energy Study (2010)* - Assesses the energy demand within Herefordshire and the ability for the county to accommodate renewable and low carbon energy technologies.
- *Herefordshire Playing Pitch Assessment (2012)* - Produces a strategic framework, audit and assessment and needs analysis of outdoor sports pitches and facilities for Herefordshire. The document arises as a result of a recommendation in the Herefordshire and Worcestershire Sports Facilities Framework to develop local standards for playing fields and sports pitches throughout Herefordshire.
- *Open Spaces Study (2006)* - The 2006 space audit and assessment of need is a snap shot of the quality, quantity and distribution of open space across Herefordshire.
- *Play Facilities Study (2012)* - The Play Facilities Study 2012 updates the previous play facilities analysis under the Open Spaces Study 2006 and provides guidance and a framework for the development, delivery and continued sustainability of providing new and improved play facilities for children and young people in Herefordshire to 2031.
- *Strategic Flood Risk Assessment (SFRA) and Water Cycle Study (2009)* - The Strategic Flood Risk Assessment (SFRA) provides a summary of flood risk in Herefordshire to inform the location of future development. The Water Cycle Study examines how water resources and water supply infrastructure, wastewater treatment, water quality, sewerage and flood risk could constrain growth across Herefordshire.

3.6 Appendix 1 of the Bosbury Plan Scoping Report provides additional detail on the Plans and Policies mentioned above and identifies the implications for the SEA and NDP.

SEA Objectives and baseline characteristics

- 3.7 The SEA objectives that were used at Stages A and B of the process are listed in the following table.

SEA Objective	
1	To maintain or enhance nature conservation (biodiversity, flora and fauna)
2	To maintain or enhance the quality of landscapes and townscapes
3	To improve the quality of surroundings
4	To conserve or where appropriate enhance the historic environment and culture heritage
5	To improve air quality
6	To reduce the effect of traffic on the environment
7	To reduce contributions to climate change
8	To reduce vulnerability to climate change
9	To improve water quality
10	To provide for sustainable sources of water supply
11	To avoid, reduce and manage flood risk
12	To conserve soil resources and quality
13	To minimise the production of waste
14	To improve the health of the population
15	To reduce crime and nuisance
16	To conserve natural and manmade resources

- 3.6 The SEA objectives detailed above conform to the SEA Directive, and are derived from the Sustainability Appraisal undertaken for the Herefordshire Local Plan Core Strategy 2011-2031.
- 3.8 Baseline information gathered during Stage A of the SEA process provided details of the current environmental characteristics of the neighbourhood area and the status of its natural assets and features (refer to Appendix 2). This information was analysed as part of Task B2 of SEA, which looked at the extent to which the emerging NDP policies will help or obstruct these characteristics.
- 3.9 Following the completion of Task B2 of SEA it was apparent that the largest environmental issue within the Parish which has an impact on the County as a whole is water quality; the River Wye, though currently meeting all its conservation objectives, will require effective management, in order to ensure that the quality of water does not deteriorate to the point that nutrient targets are missed further downstream.
- 3.10 The NDP does not propose that sites be allocated for development and contains only criteria-based policies. On this basis, the delivery of the NDP should not exacerbate existing problems regarding water quality or have an unacceptable adverse impact.
- 3.11 Baseline characteristics within the SEA detail the current environmental status of environmental characteristics in the neighbourhood plan area from different sources. The source of Baseline Information used in Table A2 in Appendix 2, and analysed in Table B2 can be found in Appendix 4.

- 3.8 The largest Environmental issue within the Group Parish that impacts upon the County as a whole is the flood risk in central Bosbury. This is due to the proximity of the River Leadon near the centre of the village. This has been identified as a high risk area of flooding (flood zone three). Therefore policies should aim to mitigate the risk of flooding or aim to alleviate flooding.
- 3.9 The NDP policies will look to mitigate against this and also the proposals in the Plan are not over and above the Core Strategy and therefore should not have a significant impact. There are three objectives for which there is no local baseline data available and therefore this provides a limitation on the baseline data and whether the NDP policies are able to move towards or away from this data, this also means that there are no future trends to link the SEA objective too.

4.0 Assessing the NDP Objectives

- 4.1 The following are objectives listed in the NDP that aim to realise the vision for Bosbury 2031:
- **Objective 1-** Deliver a housing growth strategy tailored to the needs and context of Bosbury village
 - **Objective 2-** Sustain and improve local facilities for existing and new residents.
 - **Objective 3-** Strengthen and support economic activity.
 - **Objective 4-** Only consider sensitive development which protects and enriches the landscape and built setting.
 - **Objective 5-** Promote environmental energy performance thereby reducing carbon emissions.
 - **Objective 6-** Prioritise local distinctiveness in every element of change and growth.
 - **Objective 7-** Protect green-space and the rural landscape.
- 4.2 The table below tests these NDP objectives against the SEA objectives, providing a summary of the results of Task B1 of SEA. The full results are available at Appendix 4 of this report.

Key:	
+	Compatible
-	Possible conflict
0	Neutral
X	No relationship between objectives
?	Unclear, more information needed

NDP Objectives	SEA Objectives															
	1	2	3	4	5	6	7	8	9	10	11	12	13	14	15	16
Objective 1	0	+	+	+	?	?	?	?	?	?	?	?	+	x	x	+
Objective 2	0	+	+	0	0	x	x	x	x	x	x	x	x	+	+	0
Objective 3	0	+	+	0	0	0	x	x	x	x	x	x	x	+	x	x
Objective 4	++	+	+	+	0	0	x	x	x	x	x	+	x	x	x	+
Objective 5	0	0	0	0	+	x	+	+	x	x	x	+	+	+	x	0
Objective 6	+	+	+	+	+	+	+	+	+	+	+	+	+	+	+	+
Objective 7	++	+	+	x	+	+	+	x	x	x	+	+	x	+	+	+

- 4.3 Overall within Stage B1 the majority of the NDP objectives have met SEA objectives, and the rest had either a neutral compatibility with the different objectives, had no relationship with the SEA objective or needed further information such as location of development.

5.0 Assessing the NDP Neighbourhood Planning Options

- 5.1 All options that were considered by Bosbury during the development of their Plan have been assessed as part of the SEA, the summary matrix of the assessment can be found in Table B2 options and covers amount of houses to be developed, height/ storeys of development and development within the settlement boundary, the options table are in Appendix 4
- 5.2 The options covered the topics that are likely to formulate the topics going forward in the Plan. These options were also considered at public consultation events across the Parish in July 2014. The results of this will feed into the identification of the preferred options, and ultimately the draft policies.
- 5.3 Policy 1 options, the Housing growth options offer different number of houses and levels of growth within the Parish. Option 5 to 10 of housing growth policy has an uncertain impact on the environmental baseline as it does not specify scale and location of potential housing development, this is likely to be measured on a case by case basis. Option 8 and 9 would provide the most significant environmental impact in terms of biodiversity and traffic impact and may not meet the requirements within the Core Strategy, however Policy 5 may help mitigate environmental impact. Option 1,2,3 and 4 meet the requirements within the Core Strategy and are likely to have a significant impact as the scale and extent of such development are small.
- 5.5 Policy 2 options, several options have been considered for local character most has a positive impact towards the baseline data and will help mitigate environmental effects of new development. However Option 13 has an uncertain impact as it is very subjective in nature and may be hard to implement when considering what a 'spoiling' a view is.
- 5.6 Policy 3 options, several options have been considered for local economy most of these will have a positive effect towards the environment but could potentially cause an increase in traffic however this will be mitigated with Bosbury Neighbourhood Plan policy 5.
- 5.7 Policy 4 options, several options have been considered for local Facilities, all move towards the SEA baseline objectives and have a positive impact on the surrounding environment as it strives to enhance existing facilities in a sustainable way.

- 5.8 There was only one option for Policy 5 options, to improve footpaths and bridleways, pedestrian and cycle facilities moves towards the SEA baseline and has a positive environmental impact. This policy option promotes sustainable transport within Bosbury and will help to mitigate impact from housing growth policy.
- 5.9 All policy 6 options for Landscape and the Environment generally move towards the SEA baseline and will help mitigate potential effects of new development on visual impact, environmental impact on habitat and wildlife corridors. All of the options considered will help alleviate impact from development and conforms with the landscape and townscape policy (LD1) and the Biodiversity and Geodiversity (LD2) policies within the Core Strategy.
- 5.10 Options for Settlement Boundary had four various options option three has been selected from community consultation. Option three was chosen as it was the most popular as 63% of people that turned up to the consultation event voted for this option. Old Court barn site would be included within the settlement boundary and has generally a positive effect on the SEA baseline.
- 5.11 A 'do nothing' option was also considered by the Parish, i.e. not undertaking a Neighbourhood Development Plan. However this was disregarded at an early stage by the Parish Council as it was highlighted within the early community consultation that the majority of the community would support the work undertaken for a Neighbourhood Plan, and policies within the Core Strategy will mitigate any potential detrimental effects.
- 5.12 Overall all of the options had a mix of positive and uncertain effect on the SEA objectives and baseline. If the policies are developed incorporated the elements of the options that are ensuring mitigation of new development and additional details are provided for the location and design of any proposed site then the assessment of the policies should result in a positive result. As these options were generally moving towards the SEA objectives any further alternatives would probably be moving away and therefore no further options are required to be assessed.

NDP Options	SEA Objectives															
	1	2	3	4	5	6	7	8	9	10	11	12	13	14	15	16
P1Option 1	-	-	-	-	?	-	?	?	-	?	?	-	?	?	?	-
P1Option 2	-	-	?	?	-	-	?	?	?	?	?	-	?	?	?	-
P1Option 3:	+	+	+	+	x	0	x	x	x	x	x	x	0	0	0	+
P1Option 4	?	?	?	0	?	?	?	?	?	?	?	?	?	?	?	?
P1Option 5	?	?	?	?	?	?	?	?	?	?	?	?	?	?	?	?
P1Option 6	?	?	?	?	?	?	?	?	?	?	?	?	?	?	?	?
P1Option 7	?	?	?	?	?	-	?	?	?	?	?	?	?	?	?	?
P1Option 8	-	?	?	?	?	-	?	?	?	?	?	-	?	?	?	-
P1Option 9	0	?	?	?	?	?	?	?	?	?	?	?	?	?	?	?
P1Option10	+	+	+	?	?	?	?	?	?	?	?	+	+	?	?	+
P2Option11	+	+	+	+	x	x	x	x	x	x	x	+	+	+	+	+
P2Option12	x	+	+	+	x	x	x	x	x	x	x	+	x	x	x	+
P2Option 13	?	?	?	?	?	?	?	?	?	?	?	?	?	?	?	?
P2Option 14	x	+	+	+	+	+	x	x	x	x	x	x	x	x	x	x
P2Option 15	x	+	+	+	x	x	+	+	x	+	+	+	x	+	x	+
P2Option 16	x	+	+	+	x	x	+	+	x	+	+	+	x	+	x	+
P2Option 17	+	+	+	+	+	x	+	+	+	x	x	+	x	+	x	+
P2Option 18	+	+	+	+	x	x	x	x	x	x	x	x	x	x	x	+
P2Option 19	+	+	+	+	x	x	+	x	x	x	x	+	+	x	x	+
P2Option 20	+	+	+	x	x	x	+	x	x	x	x	+	+	x	x	+
P3Option 21	x	x	+	x	x	?	?	?	?	?	?	?	?	+	+	x
P3Option 22	x	x	+	x	x	x	x	x	x	x	x	x	x	+	+	x

NDP Options	SEA Objectives															
	1	2	3	4	5	6	7	8	9	10	11	12	13	14	15	16
P4Option 23	x	+	+	x	x	x	x	x	x	x	x	+	+	+	+	x
P4Option 24	x	x	+	x	+	+	+	+	+	+	+	+	+	x	x	x
P4Option 25	x	+	+	x	+	+	x	x	x	x	x	x	+	+	x	x
P5Option 26	+	+	+	x	x	x	x	x	x	x	x	x	x	x	x	+
P6Option 27	+	+	+	x	x	x	x	x	x	x	x	x	x	x	x	+
P6Option 28	+	+	+	+	x	x	x	x	x	x	x	x	x	x	x	+
P6Option 29	+	+	+	+	x	x	x	x	x	x	x	x	x	x	x	+

Settlement Boundary Options

SB Options																
Option 1	+	+	+	0	0	0	x	x	x	x	-	x	x	x	x	x
Option 2	+	+	+	x	?	?	x	x	x	x	x	x	x	x	x	x
Option 3	+	+	+	?	?	?	0	0	0	0	-	0	+	+	+	0
Option 4	+	+	+	x	?	?	x	x	x	x	x	x	x	x	x	x

6.0 Appraisal of the policies

6.1 A key part of developing a plan such as the Bosbury NDP is developing a range of options and testing these, so that a preferred way forward can be selected. The policies selected below have followed from the options process.

6.2 The following are policies listed in the NDP that aim to realise the vision for Bosbury 2031:

- **Policy 1-Housing Growth**
- **Policy 2-Local Character**
- **Policy 3-The Local Economy**
- **Policy 4-Local Facilities**
- **Policy 5-Transport**
- **Policy 6-Biodiversity (Previously named Landscape and the Environment)**

Stage B of SEA

6.3 In the context of Task B1 of SEA, the previous section of this report identified that many of the NDP objectives are compatible with the SEA framework, while others had either a neutral impact, no relationship with the SEA objectives or needed further information such as location of development. Additional policy safeguards within the NDP and Local Plan (Core Strategy) would help mitigate any possible conflicts.

6.4 B2 measured SEA objectives against the baseline with the NDP policies. The majority of the NDP policies have a positive effect as the policies are mainly criteria based which is requesting that potential development adhere to each of the criteria, therefore new development will be considered on a case by case basis. Some policies have moved significantly towards the SEA objective and baseline as they focussed on promoting sustainable development and protection of the natural and built environment. There are uncertain effects from new development to the east of the parish and flooding. To determine the effect flooding will depend on the on the development scheme itself and can be measured on a case by case basis. Many of the NDP policies should have a mitigating impact upon these sites such as utilising the sustainable transport policy (5B) and the transport measures to reduce the overall impact. The development criteria for housing development in the village will help to ensure that houses design and scale in keeping with the character of the village. The scale of new local employment opportunities may have a slight impact to traffic but can be measured through sustainable development.

NDP Options	SEA Objectives															
	1	2	3	4	5	6	7	8	9	10	11	12	13	14	15	16
Policy 1	0	+	+	+	0	?	x	x	x	x	x	+	+	+	0	0
Policy 2	+	+	+	+	x	x	+	+	x	x	+	+	+	0	0	+
Policy 3:	+	+	+	+	0	0	0	0	x	x	x	+	+	+	+	+
Policy 4	x	+	+	+	0	0	0	0	x	x	x	x	+	+	+	+
Policy 5	+	+	+	x	+	+	+	+	0	x	x	0	+	+	x	+
Policy 6	+	+	+	+	0	x	x	x	x	x	+	+	x	+	x	+

- 6.5 The results of Task B3, as shown at Appendix 4, demonstrate that the cumulative impact over the time scale is generally positive. Although the development policies indicate that in the short term there may be a neutral or uncertain impact due to the development works that would be undergoing, but within the middle and long term the effects often turn positive due to the criteria in additional NDP policies that provide mitigation methods against the development. Therefore the majority of the policies will be balanced with sustainable policies to minimise environmental impact.
- 6.6 Within the B4 assessment which identified the cumulative effects of the Plan's policies it was highlighted that the policies contained in the Bosbury Plan are not over and above the Core Strategy. Therefore the cumulative effect will not exceed the policies within the Core Strategy which have also been subject to a full Sustainability Appraisal.
- 6.7 Mitigation measures have been included within the SEA assessment. The mitigation areas mostly help to protect and enhance the local character of the area and the natural landscape. These policies will also help conserve and enhance biodiversity within the parish. This should help to provide mitigation against the potential adverse impacts from new development.

Stage D-Post regulation 14 consultation

- 6.8 Bosbury first began their first regulation 16 on the 14 May 2015 to 25 June 2015. The plan did not progress to examination as their plan failed to demonstrate how it would meet their housing target or explain the constraints which affected their proportionate growth target. Consequently Herefordshire Council requested Bosbury to provide further justification to demonstrate the constraints within their settlement. Bosbury steering group added a justification statement to explain the environmental constraints to support their housing position. They re-submitted their regulation 16 period which ran from 14 May to 25 June 2015. The plan was sent through to examination on 17 January 2017 and the Examiner's Report was received on the 16 March. The Parish decided to take on board some of the Examiner's comments but decided to significantly change the policies in the plan therefore the plan is required to go through regulation 16 and examination again. Since Examination more dwellings have been granted planning permission, this gives further certainty that Bosbury is likely to meet their housing target within the plan period. There were significant changes to policies 1,3,5 and 6 these have been rescreened in D3 assessment and can be found in appendix 8.
- 6.9 Most of the changes post examination 14 within the NDP have minor wording changes to policies 2 and 4 to clarify and update the policies, so no rescreening to these policies have been carried out. The steering group have changes wording to policies 1 and 3 to make the policies more positive, flexible and clear making them easy to implement. Policy 5 removed the unimplementable aspects of this policy and has made the policy more positive and has focused on the safety aspects of transport and promotes improvements to green transport networks.

- 6.10 The comments received at regulation 14 and 16 Consultation along with the Examiner's comments were taken into consideration and amendments were mainly minor wording changes to ensure consistency with the Framework and to provide more clarity for decision makers. The conclusion set out in the Draft Environment Report reg 16 is still valid that the policies and objectives are unlikely to have a significant effect on the SEA baseline. Following rescreening of the amended policies it is considered that the Bosbury NDP is now in general conformity with both national planning policy contained in the National Planning Policy Framework and strategic policies set within the Herefordshire Local Plan (Core Strategy). Therefore, no further changes are recommended as a result of this SEA (stage D).

7.0 Implementation and monitoring

- 7.1 Herefordshire Council as the Local Planning Authority should make arrangements to monitor the significant effects of implementing a neighbourhood plan.
- 7.2 Indeed, Regulation 17 of the Environmental Assessment of Plans and Programmes Regulations 2004 requires the Local Planning Authority to monitor the significant environmental effects of the implementation of any NDP that was subject to SEA, in order to identify unforeseen adverse effects at an early stage and to enable appropriate remedial actions.
- 7.3 Accordingly, Herefordshire Council will monitor outcomes from the NDP policies and the results of these will be reported in the Council's Annual Monitoring Report (AMR).
- 7.4 The AMR runs from 1 April to 31 March each year and the topics covered therein include the following:
- Housing delivery
 - Previously developed land
 - Housing completions
 - Affordable housing conditions
 - Employment land delivery

8.0 Next steps

- 8.1 This report alongside the final NDP plan will be formally submitted to Herefordshire Council and will be subject to a 6 week consultation as part of Regulation 16. Following this Consultation the Plan will be submitted for examination for the second time.

Appendix 1

Initial Habitat Regulations Assessment and Strategic Environmental Assessment Screening Notification

The Neighbourhood Planning (General) Regulation 2012 (Reg. 32)

Conservation of Habitats and Species Regulations 2010 (d)

Neighbourhood Area:	Bosbury & Catley Neighbourhood Area
Parish Council:	Bosbury & Coddington Group Parish Council
Neighbourhood Area Designation Date:	01/08/2014

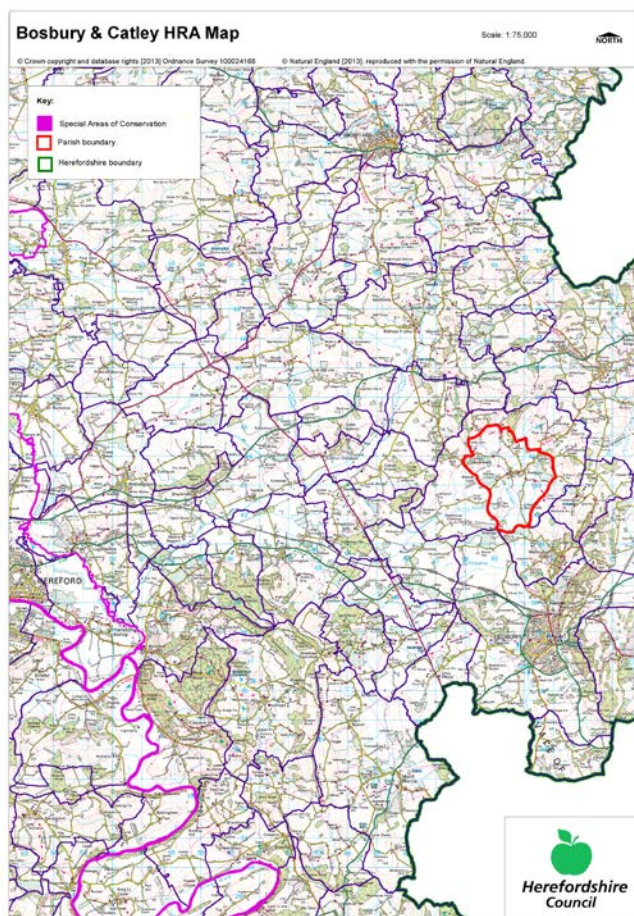
Introduction

This Initial Habitat Regulations Assessment (HRA) and Strategic Environmental Assessment (SEA) Screening has been undertaken to assess whether any European Sites exist within or in proximity to the Neighbourhood Area which could be affected by any future proposals or policies.

Through continual engagement the outcomes of any required assessments will help to ensure that proposed developments will not lead to Likely Significant Effects upon a European Site or cause adverse impacts upon other environmental assets, such as the built historic or local natural environment.

This document is copyright of Herefordshire Council, please contact the Neighbourhood Planning team if you wish to reuse it in whole or part

HRA Initial Screening: Map showing relationship of Neighbourhood Area with European Sites (not to scale)



Initial HRA Screening

River Wye (including the River Lugg) SAC:

Does the Neighbourhood Area have the River Wye (including the River Lugg) in or next to its boundary?	N	The River Wye is 12.58km away from the Neighbourhood Area.
Is the Neighbourhood Area in the hydrological catchment of the River Wye (including the River Lugg) SAC?	N	The Neighbourhood Area is not within the hydrological catchment of the River Wye (including the River Lugg)
If yes above, does the Neighbourhood Area have mains drainage to deal with foul sewage?	N/A	

Downton Gorge SAC:

Is the Neighbourhood Area within 10km of Downton Gorge SAC?	N	Downton Gorge is 38.1km away from the Neighbourhood Area.
---	---	---

River Clun SAC:

Does the Neighbourhood Area include: Border Group Parish Council or Leintwardine Group Parish Council?	N	River Clun does not border the Neighbourhood Area.
--	---	--

Usk Bat Sites SAC:

Is the Neighbourhood Area within 10km of the SAC boundary?	N	Usk Bat Sites are 55.1km away from the Neighbourhood Area.
--	---	--

Wye Valley & Forest of Dean Bat Sites SAC:

Is the Neighbourhood Area within 10km of any of the individual sites that make up the Wye Valley & Forest of Dean Bat Sites?	N	Wye Valley and Forest of Dean Bat Sites are 21.6km away from the Neighbourhood Area.
--	---	--

Wye Valley Woodlands SAC:

Is the Neighbourhood Area within 10km of any of the individual sites that make up the Wye Valley Woodlands Site?	N	Wye Valley Woodlands are 29.5km away from the Neighbourhood Area
--	---	--

HRA Conclusion:

The assessment above highlights that no European Sites will need to be taken into account in the future Neighbourhood Development Plan for the Bosbury & Catley Neighbourhood Area and a Full HRA Screening will not be required.

European Site

(List only those which are relevant from above)

Strategic Environmental Assessment Initial Screening for nature conservation landscape and heritage features

The following environmental features are within or in general proximity to the Bosbury & Catley Neighbourhood Area and would need to be taken into account within a Strategic Environmental Assessment. In addition, the NDP will also need to consider the other SEA topics set out in Guidance Note 9a to ensure that the plan does not cause adverse impacts.

SEA features	Total	Explanation	SEA required
Air Quality Management Areas (AQMA)	0	There are no AQMAs within the Neighbourhood Area	N
Ancient Woodland	16	Beacon Hill; Fishpool Wood (border); Yew Tree Coppice (border); Meephill Coppice (border); Hansnett Wood (border); Camp Coppice (border); Raven Hill Wood (border); Loxter Wood (border); Hope End Wood (border); Sparrow Hill Wood (border); Oyster Hill Wood (border); Mayfields Wood (border); Slatch Farm Wood (border); Old Country Wood (border); Tunners Wood (border); Hollings Wood (border)	Y
Areas of Archaeological Interest (AAI)	0	There are no AAls within the Neighbourhood Area	N
Areas of Outstanding Natural Beauty (AONB)	0	There are no AONBs within the Neighbourhood Area	N
Conservation Areas	1	Bosbury village	Y
European Sites (SAC)	0	There are no SACs within the Neighbourhood Area	N
Flood Areas/Zones		Flood Zones 2 and 3 runs along the River Leadon and tributaries off this	Y
Geoparks	1	Malvern Hills Geopark	Y
Listed Buildings	Numerous	There are numerous listed buildings throughout the Neighbourhood Area	Y
Local Sites (SWS/SINCS/RIGS)	4 (RIGS) 24 (SWS)	RIGS: Mathon sand and gravel quarry (border); Brockhill stream section (border); Brockhill quarry (border); Gardiners quarry (border) SWS: Field near Merrings Farm; Meadows at Catley Farm; Beacon Hill; Field near canal at Swinmore (border); Old canal at Ashperton (border); Hasnett Wood (border); Highlea Wood (border); Meephill Coppice & Childer Wood (border); Woodlands above Birchend (border); Foxhill & Fishpool Wood (border); Slatch Wood (border); Old Country Wood (border); Strangwood (border); Disused gravel pits near Old Country House (border); Pond near Luggs Mill Farm (border); Longworth Meadow (border); Frith Wood, Bradlow Knoll & Dog Wood (border); Ledbury Cutting (border); Bagburrow Wood	Y

		(border); Pool near Mathon Lodge (border); Fishers Coppice (border); Cheyney Court Wood (border); Merrells Wood (border); Ashen & Yewberry Coppice (border)	
Long distance footpaths/trails	1	Herefordshire Trail	Y
Mineral Reserves Sites	0	There are no Minerals Reserves Sites within the Neighbourhood Area	N
National Nature Reserve (NNR)	0	There are no NNRs within the Neighbourhood Area	N
Registered & Unregistered Parks and Gardens	1 Registered 16 Unregistered	Registered: Hope End (border) Unregistered: Bosbury House; Upleadon Court (border); Priors Court (border); Leadon Court (border); Old Colwall (border); Canon Frome Court (border); Homend (border); Mainstone Court (border); Upper Hall (border); Barton Court (border); Hoe Court (border); The Winnings (border); Linden (border); Perrycroft (border); Brand Lodge (border); Wynds Point (border)	Y
Scheduled Ancient Monuments (SAM)	2	Churchyard Cross, Holy Trinity Church; Castle Frome Castle (border)	Y
Sites of Special Scientific Interest (SSSI)	3	Birchend (Favourable (part) Unfavourable Recovering (part)) (border); Bank & Cother Wood (Favourable (part) Unfavourable recovering (part)) (border); Malvern Hills (Favourable (part) Unfavourable Recovering (part)) (border)	Y

Decision Notification:

The initial screening highlights that the Neighbourhood Development Plan for the Bosbury & Catley Neighbourhood Area:

- a) Will require further environmental assessment for Strategic Environmental Assessment.

Assessment date: 11/07/2014

Assessed by: James Latham

Appendix 1: European Sites

The table below provides the name of each European Site, which has been screened in for the purposes of neighbourhood planning in Herefordshire; includes their site features of integrity; and vulnerability data. This is based on the sites individual features of integrity and their vulnerabilities, which could include distance criteria. This has been used in identifying which parishes are likely to require a full HRA Screening of their future Neighbourhood Development Plan, to establish if their plan might have Likely Significant Effects on a European Site.

Downton Gorge
Site Features: <i>Tilio-Acerion</i> forests of slopes, screes and ravines
Vulnerability data: 10km for air quality associated with poultry units or other intensive agricultural practices.

River Clun
Site Features: Freshwater pearl mussel <i>Margaritifera margaritifera</i>
Vulnerability data: Water quality is important to maintain the site feature. Parishes either side of the River Clun will be affected.

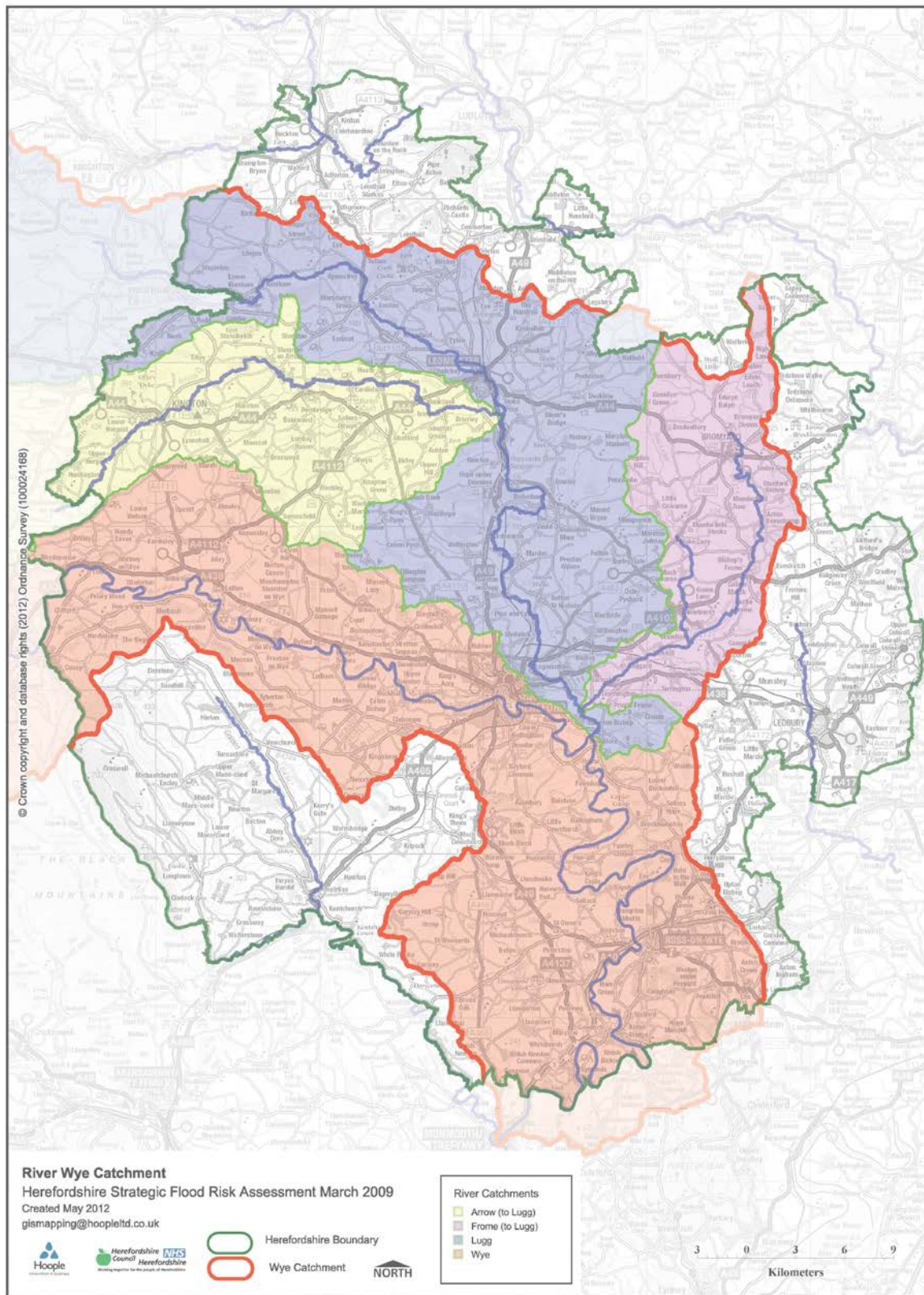
River Wye
Site Features: Water courses of plain to montane levels with the <i>Ranunculion fluitantis</i> and <i>Callitriche-Batrachion</i> vegetation. Transition mires and quaking bogs. White-clawed (or Atlantic Stream) crayfish <i>Austropotamobius pallipes</i> . Sea lamprey <i>Petromyzon marinus</i> . Brook lamprey <i>Lampetra planeri</i> . River lamprey <i>Lampetra fluviatilis</i> . Twaite shad <i>Alosa fallax</i> . Atlantic salmon <i>Salmo salar</i> . Bullhead <i>Cottus gobio</i> . Otter <i>Lutra lutra</i> . Allis shad <i>Alosa alosa</i>
Vulnerability data: Proximity: Developments should not be within 100m of the designated bank. Some developments beyond 100m may also have impacts based on proximity and these issues should be addressed where possible when developing NDP policy and choosing site allocations. Water Quality: Within the whole catchment of the River Wye, which includes the River Lugg, mains drainage issues with regards to water quality are being resolved through the Core Strategy / Local Plan and development of a Nutrient Management Plan. Welsh Water should be consulted to ensure that the proposed growth will be within the limit of their consents. Otters: "An otter will occupy a 'home range', which on fresh waters usually includes a stretch of river as well as associated tributary streams, ditches, ponds, lakes and woodland. The size of a home range depends largely on the availability of food and shelter, and the presence of neighbouring otters. On rivers, a male's home range may be up to 40km or more of watercourse and associated areas; females have smaller ranges (roughly half the size) and favour quieter locations for breeding, such as tributary streams. Otters without an established home range are known as 'transients'. They are mostly juveniles looking for a territory of their own, or adults that have been pushed out of their territories. Transient otters may use an area for a short while, but they will move on if conditions are not suitable or if they are driven away by resident otters. Transients will have been important in extending the range of otters, but they are very difficult to identify from field signs. Within a home range an otter may use many resting sites. These include above-ground shelters, such as stands of scrub or areas of rank grass, and underground 'holts' – for example, cavities under tree roots and dry drainage pipes." (Source: EA website: http://www.environmentagency.gov.uk/static/documents/Business/Otters_the_facts.pdf accessed 09/04/2013)

Usk Bat Site
Site Features: Annex I habitats present as a qualifying feature, but not a primary reason for site selection: European dry heaths, Degraded raised bogs still capable of natural regeneration, Blanket bogs, Calcareous rocky slopes with chasmophytic vegetation, Caves not open to the public, <i>Tilio-Acerion</i> forests of slopes, screes and ravines. Annex II species of primary reason for site selection: Lesser horseshoe bat <i>Rhinolophus hipposideros</i> , UK population 5%, although it is suggested this is an underestimate.
Vulnerability data: Lesser Horseshoe bats are known to migrate between 5km and 10km between their summer and winter roosts. The Lesser Horseshoe Bat is vulnerable to disturbance; light pollution; and habitat loss. Check with the planning ecologist for other issues.

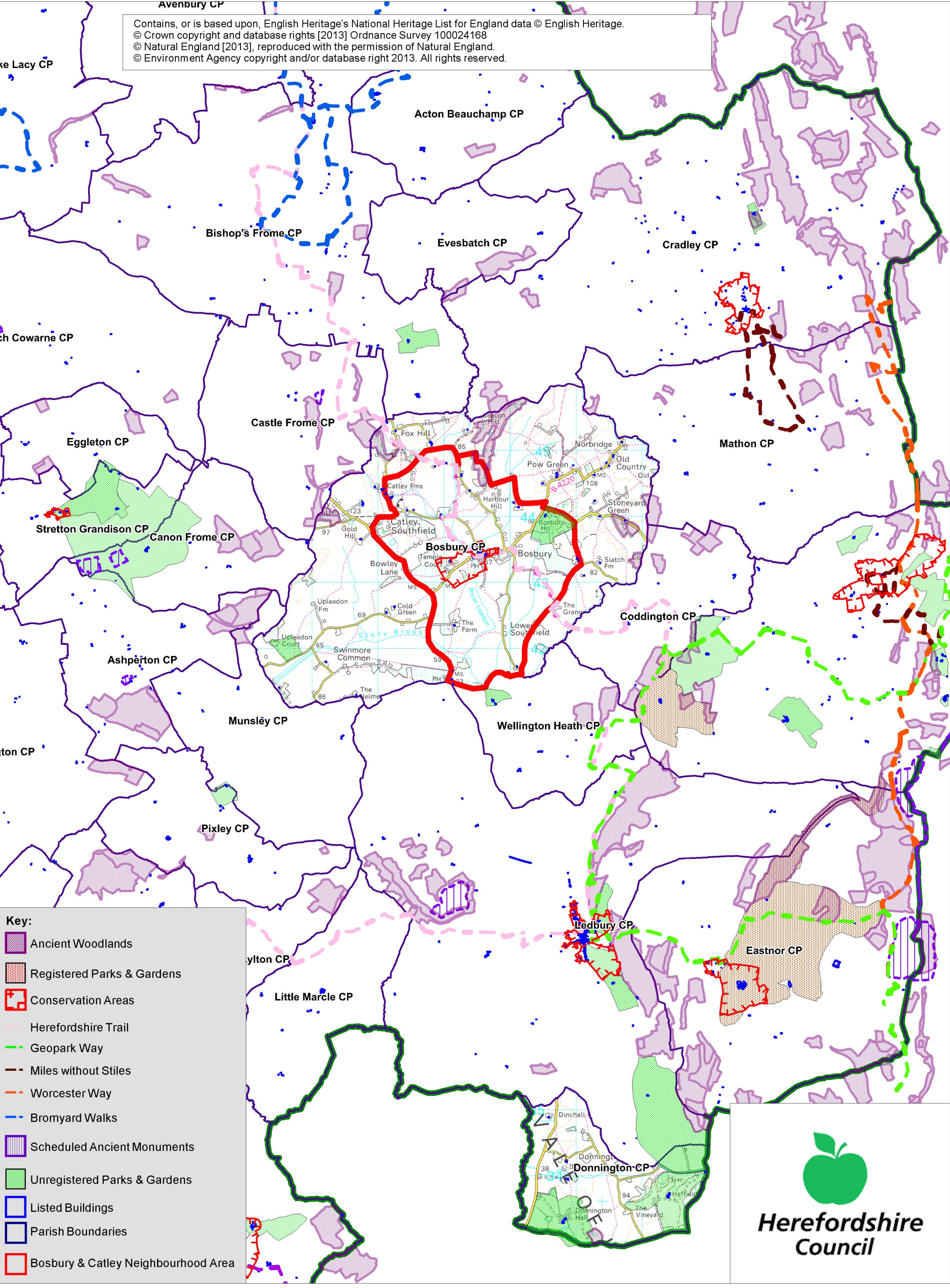
Wye Valley and Forest of Dean Bat Sites
Site Features: Annex II species that are a primary reason for site selection: Lesser horseshoe bat <i>Rhinolophus hipposideros</i> . Greater horseshoe bat <i>Rhinolophus ferrumequinum</i>
Vulnerability data: Lesser Horseshoe bats are known to migrate between 5km and 10km between their summer and winter roosts. The Lesser Horseshoe Bat is vulnerable to disturbance; light pollution; and habitat loss. Check with the planning ecologist for other issues.
Greater Horseshoe bats are known to migrate between 20-30km between their summer and winter roosts.
NDPs closest to the European Site will need to consider: Woodland habitat buffer. Lesser Horseshoe Bat: Old buildings; woodland locations; sheltered valleys, extensive deciduous woods or dense scrub, close to roost sites. In areas of fragmented habitats, linear habitats such as hedgerows are important corridors. Vulnerable to loss or disturbance of both summer and winter roosts and removal of linear habitat. Greater Horseshoe Bat: Large buildings, pasture, edge of mixed deciduous woodland and hedgerows. Mixed land-use especially south-facing slopes, favours beetles, moths and insects they feed on. During the winter they depend on caves, abandoned mines and other underground sites for undisturbed hibernation. A system/series of sites required. Vulnerable to loss of insect food supply, due to insecticide use, changing farming practices and loss of broad-leaved tree-cover and loss / disturbance of underground roosts sites.

Wye Valley Woodlands
Site Features: Annex I habitats that are a primary reason for site selection: Beech forests <i>Asperulo-Fagetum</i> , <i>Tilio-Acerion</i> forests of slopes, screes and ravines, <i>Taxus baccata</i> woods of the British Isles. Annex II species present as a qualifying feature, but not a primary reason for site selection: Lesser horseshoe bat <i>Rhinolophus hipposideros</i> , 51-100 residents
Vulnerability data: Lesser Horseshoe bats are known to migrate between 5km and 10km between their summer and winter roosts. The Lesser Horseshoe Bat is vulnerable to disturbance; light pollution; and habitat loss. Check with the planning ecologist for other issues. NDPs closest to the European Site will need to consider: Woodland habitat buffer. Lesser Horseshoe Bat: Old buildings; woodland locations; sheltered valleys, extensive deciduous woods or dense scrub, close to roost sites. In areas of fragmented habitats, linear habitats such as hedgerows are important corridors. Vulnerable to loss or disturbance of both summer and winter roosts and removal of linear habitat.


Appendix 2: Wye Catchment Map

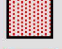



Contains, or is based upon, English Heritage's National Heritage List for England data © English Heritage.
© Crown copyright and database rights [2013] Ordnance Survey 100024168
© Natural England [2013], reproduced with the permission of Natural England.
© Environment Agency copyright and/or database right 2013. All rights reserved.





Key:


 Ancient Woodlands


 Registered Parks & Gardens


 Conservation Areas


 Herefordshire Trail


 Geopark Way


 Miles without Stiles


 Worcester Way

 Bromyard Walks

 Scheduled Ancient Monuments

 Unregistered Parks & Gardens

 Listed Buildings

 Parish Boundaries

 Bosbury & Catley Neighbourhood Area



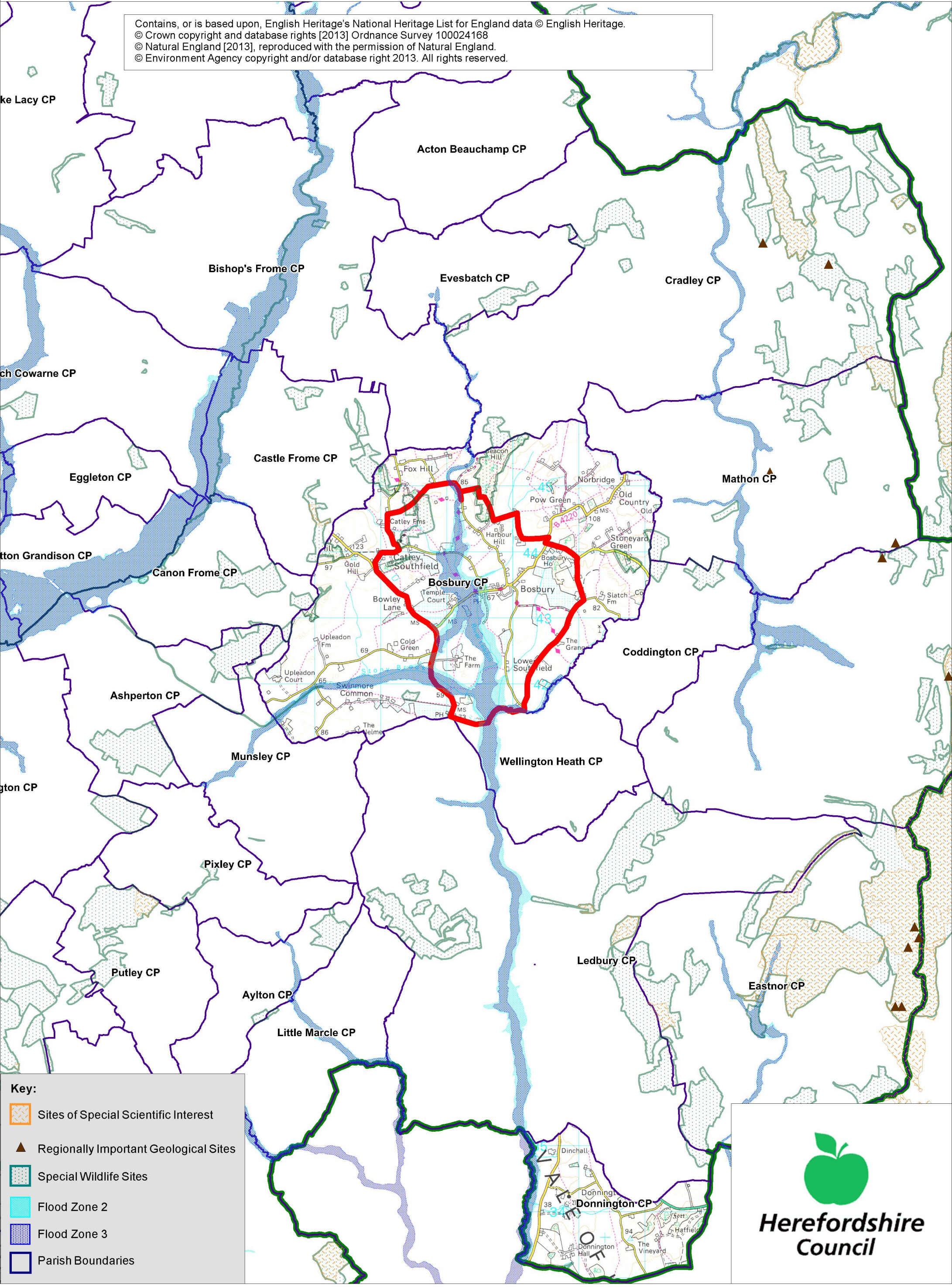
Herefordshire
Council

Bosbury & Catley SEA Map 2

Scale: 1:50,000



Contains, or is based upon, English Heritage's National Heritage List for England data © English Heritage.
© Crown copyright and database rights [2013] Ordnance Survey 100024168
© Natural England [2013], reproduced with the permission of Natural England.
© Environment Agency copyright and/or database right 2013. All rights reserved.



Key:

- Sites of Special Scientific Interest
- Regionally Important Geological Sites
- Special Wildlife Sites
- Flood Zone 2
- Flood Zone 3
- Parish Boundaries



**Herefordshire
Council**

Appendix 2

Strategic Environmental Assessment



Bosbury & Catley Neighbourhood Area

Scoping Report

October 2014

Consultation on the Scoping Report

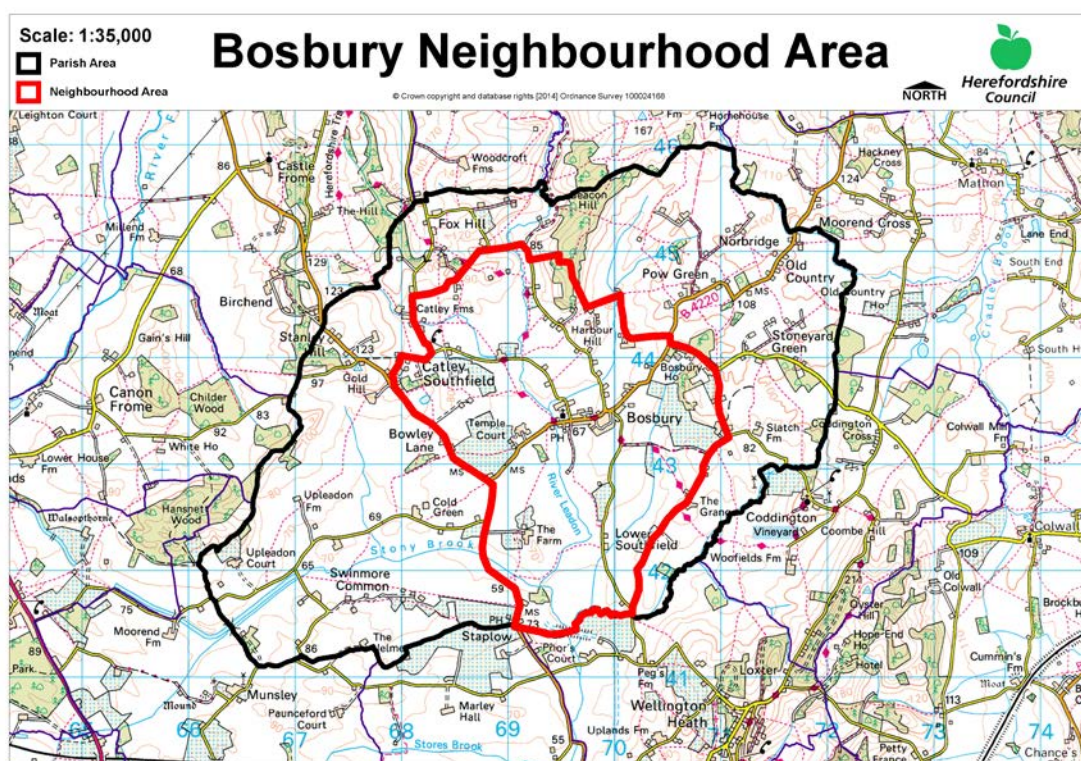
The aim of the consultation process is to involve and engage with statutory consultees and other relevant bodies on the scope of the appraisal. In particular, it seeks to:

- Ensure the SEA is both comprehensive and sufficiently robust to support the Neighbourhood Development Plan during the later stages of full public consultation;
- Seek advice on the completeness of the plan review and baseline data and gain further information where appropriate;
- Seek advice on the suitability of key sustainability issues;
- Seek advice on the suitability of the sustainability objectives.

Comments on this Scoping Report have been invited from the three consultation bodies as required by the SEA regulations, together with the Natural Resources Wales.

The three consultation bodies are as follows:

1. Natural England;
2. English Heritage;
3. Environment Agency.



Template A1: Identification and review of local Neighbourhood Area relevant plans, policies and programmes

Parish Council Name: Bosbury

Neighbourhood Development Plan Name: Bosbury Plan

Date completed: August 2014

Plans and Programmes	Type of document	Date	Overview	Key message, target/objective/indicator	SEA topic(s) ¹	Implications for the NDP and SEA
The EC Conservation of Habitats and Species Regulations	European Union Legislation	2010	These regulations transpose the Habitats Directive in England, Wales and to a limited extent Scotland by ensuring that activities are carried out in accordance with the Habitats Directive, which is to protect biodiversity through the conservation of natural habitats and species of wild flora and fauna.	The Regulations make it an offence (subject to exceptions) to deliberately capture, kill, disturb, or trade in the animals listed in Schedule 2, or pick, collect, cut, uproot, destroy, or trade in the plants listed in Schedule 4. However, these actions can be made lawful through the granting of licenses by the appropriate authorities.	<ul style="list-style-type: none">• Biodiversity• Cultural heritage and the landscape	The Neighbourhood Plan should be compliant with all the relevant legislation and regulations.

¹ Derived from the LDF General Scoping Report (June 2007)

This document is copyright of Herefordshire Council, please contact the Neighbourhood Planning team if you wish to reuse it in whole or part.

Plans and Programmes	Type of document	Date	Overview	Key message, target/objective/indicator	SEA topic(s) ¹	Implications for the NDP and SEA
The EC Water Framework Directive	European Union	2000	Commits all EU member states to achieve good qualitative and quantitative status of all water courses by 2015	Aims for 'good status' for all ground and surface waters (rivers, lakes, transitional waters, and coastal waters) in the EU	<ul style="list-style-type: none"> • Water 	The Neighbourhood Plan should be compliant with all the relevant legislation and regulations.
The Wildlife and Countryside Act (1981)	Domestic Legislation	1981	The major legal instrument for wildlife protection in Britain, although other significant acts have been passed since. It has numerous parts and supplementary lists and schedules many of which have been amended since publication.	The principle mechanism for the legislative protection of wildlife in Great Britain.	<ul style="list-style-type: none"> • Biodiversity • Cultural heritage and the landscape • Flora and fauna • Material assets • Soil 	The Neighbourhood Plan should be compliant with all the relevant legislation and regulations.

Plans and Programmes	Type of document	Date	Overview	Key message, target/objective/indicator	SEA topic(s) ¹	Implications for the NDP and SEA
The Countryside and Right of Way Act (2000)	Domestic Legislation	2000	Creates a statutory right of access on foot to certain types of open land, to modernise the public rights of way system, to strengthen nature conservation legislation, and to facilitate better management of AONBs.	<p>The Act provides for a new right of access on foot to areas of open land comprising: Mountain (land over 600 metres); Moorland; Heath; Downland; Registered common land.</p> <p>There are provisions to consider extending the right in the future to coastal land, but not woodland despite some early publicity suggesting this.</p>	<ul style="list-style-type: none"> • Biodiversity • Cultural heritage and the landscape • Flora and fauna • Material assets • Soil 	The Neighbourhood Plan should be compliant with all the relevant legislation and regulations.
The Natural Environment and Rural Communities Act (2006)	Domestic Legislation	2006	Designed to help achieve a rich and diverse natural environment and thriving rural communities through modernised and simplified arrangements for delivering Government policy.	Provides that any public body or statutory undertaker in England and Wales must have regard to the purpose of conservation of biological diversity in the exercise of their functions.	<ul style="list-style-type: none"> • Biodiversity • Cultural heritage and the landscape • Flora and fauna • Material assets • Soil 	The Neighbourhood Plan should be compliant with all the relevant legislation and regulations.

Plans and Programmes	Type of document	Date	Overview	Key message, target/objective/indicator	SEA topic(s) ¹	Implications for the NDP and SEA
Revised EU Sustainable Development strategy	European Union Strategy	2009	Sets out a single strategy on how the EU will more effectively meet its long-standing commitment to meet the challenges of sustainable development.	<p>Recognises the need to gradually change current unsustainable consumption and production patterns and move towards a better integrated approach to policy making. The Strategy sets overall objectives, targets and concrete actions for seven key priority challenges, predominantly environmental:</p> <ul style="list-style-type: none"> • Climate change and clean energy; • Sustainable transport • Sustainable production and consumption; • Public health threats; • Better management of natural resources; • Social inclusion, demography and migration; • Fighting global poverty. 	<ul style="list-style-type: none"> • Air • Climate factors • Cultural heritage and the landscape • Population and human health 	The Neighbourhood Plan should take into account the objectives of the strategy. The aim of sustainable development should be implicit in its approach.

Plans and Programmes	Type of document	Date	Overview	Key message, target/objective/indicator	SEA topic(s) ¹	Implications for the NDP and SEA
Biodiversity 2020: A strategy for England's wildlife and ecosystem services	National Strategy	2011	Forms part of the UK's Post-2010 Biodiversity Framework by setting out England's contribution towards the UK's commitments under the United Nations Convention of Biological Diversity.	Sets out to halt overall biodiversity loss, support healthy well-functioning ecosystems and establish coherent ecological networks, with more and better places for nature for the benefit of wildlife and people.	<ul style="list-style-type: none"> Biodiversity 	The NDP should take account of the provisions of the strategy, making the most of opportunities to enhance wildlife habitats or restore degraded ecosystems in the process.
Biodiversity 2020: A strategy for England's wildlife and ecosystem services	National Strategy	2011	Forms part of the UK's Post-2010 Biodiversity Framework by setting out England's contribution towards the UK's commitments under the United Nations Convention of Biological Diversity.	Sets out to halt overall biodiversity loss, support healthy well-functioning ecosystems and establish coherent ecological networks, with more and better places for nature for the benefit of wildlife and people.	<ul style="list-style-type: none"> Biodiversity 	The NDP should take account of the provisions of the strategy, making the most of opportunities to enhance wildlife habitats or restore degraded ecosystems in the process.
National Planning Policy Framework (NPPF)	National planning policy.	2012	Consolidates the suite of PPG/PPS into one succinct planning policy document.		<ul style="list-style-type: none"> Air Biodiversity Climate factors Cultural heritage and the landscape 	The NDP should take into account the relevant policies set within the NPPF.

This document is copyright of Herefordshire Council, please contact the Neighbourhood Planning team if you wish to reuse it in whole or part.

Plans and Programmes	Type of document	Date	Overview	Key message, target/objective/indicator	SEA topic(s) ¹	Implications for the NDP and SEA
					<ul style="list-style-type: none"> • Flora and fauna • Material assets • Population and human health • Soil • Water 	
Planning Practice Guidance	Government Guidance	2014	Provides guidance to local planning authorities and others on the operation of the planning system.		<ul style="list-style-type: none"> • Air • Biodiversity • Climate factors • Cultural heritage and the landscape • Flora and fauna • Material assets • Population and human health • Soil • Water 	The NDP should take into account the planning guidance provided within these documents.
Herefordshire Core Strategy, Pre-submission document 2011-2031	Development Plan Document (DPD)	2013	Sets out the vision, objectives and policies for the Herefordshire Local Plan (Core Strategy), which will guide development across the county up to 2031.	<p>Outlines the emerging suite of countywide planning policies relating to housing, economic development and the environment, which the NDP will need to be in conformity with where relevant.</p> <p>The Core Strategy includes a range of objectives, five</p>	<ul style="list-style-type: none"> • Air • Biodiversity • Climate factors • Cultural heritage and the landscape • Flora and fauna • Material assets • Population and human health • Soil • Water 	<p>The NDP should take account of relevant policies set within in the Core Strategy.</p> <p>Where necessary, the NDP should provide services, facilities and employment opportunities that are accessible to both local and neighbouring</p>

This document is copyright of Herefordshire Council, please contact the Neighbourhood Planning team if you wish to reuse it in whole or part.

Plans and Programmes	Type of document	Date	Overview	Key message, target/objective/indicator	SEA topic(s) ¹	Implications for the NDP and SEA
				<p>of which directly relate to rural areas:</p> <ul style="list-style-type: none"> • To meet the housing needs of all sections of the community • To improve access to services in rural areas • To strengthen the economic viability of the villages and their rural hinterlands • To achieve sustainable communities and protect the environment • To conserve, promote, utilise and enjoy our natural, built, historic and cultural assets for the fullest benefit of the whole community <p>To achieve a thriving rural Herefordshire, the Core Strategy seeks to enhance the role the villages have traditionally played in as accessible, sustainable centres for their rural catchments.</p> <p>Seeks proportional growth of up to 14% in Bosbury (Ledbury HMA) over the</p>		<p>communities.</p> <p>Bosbury is classed as an RA1 village, which means it should conform to RA1 policy. This means the village is considered a sustainable location for proportional growth of up to 14% (Ledbury HMA) over a 20 year period.</p> <p>Approx 20 dwellings will need to be delivered within the village of Bosbury between 2011 and 2031.</p>

This document is copyright of Herefordshire Council, please contact the Neighbourhood Planning team if you wish to reuse it in whole or part.

Plans and Programmes	Type of document	Date	Overview	Key message, target/objective/indicator	SEA topic(s) ¹	Implications for the NDP and SEA
				plan period.		
Herefordshire Local Transport Plan 3 (LTP) 2013-2015	Corporate	2013	Sets out the Council's strategy for supporting economic growth, social inclusion and reducing the environmental impacts of transport, as well as the program of investment for the period April 2013 to April 2015.	The document includes three key objectives, one which seeks to maintain access for rural residents and people without access to a car. Intrinsic to this is the retention of a 'core network' of bus services which focus on journeys between Hereford and the market towns, along with main transport corridors close to larger rural settlements. To this end, the strategy aims to increase the number of bus users by 1.3% (4,700 journeys) by 2015.	<ul style="list-style-type: none"> • Air • Climate factors • Population and human health 	The LTP does not explore current transport issues in the Bosbury Plan neighbourhood area, but any new development proposed through the NDP should seek to reduce the environmental impacts of transport.

Plans and Programmes	Type of document	Date	Overview	Key message, target/objective/indicator	SEA topic(s) ¹	Implications for the NDP and SEA
Understanding Herefordshire Report	Built and natural environment	2014	<p>Important to understand the place such as the local economy natural and built environment in which people live, learn and work as part of understanding their quality of life</p> <p>Enable development for economy and housing to required levels.</p> <p>Growth should be supported by sustainable transport measures.</p>	An air quality management plan is in place to tackle this. Destination Hereford project is in place to give locals more sustainable transport options.	<p>Improve air quality.</p> <p>Have a more diverse range of transport options.</p>	None identified.

Plans and Programmes	Type of document	Date	Overview	Key message, target/objective/indicator	SEA topic(s) ¹	Implications for the NDP and SEA
Malvern Hills AONB Management Plan 2009-2014	Corporate	2009	Identifies the issues and challenges facing the special features of the area and contains 24 guiding principles and 46 strategic objectives which will help address them.		<ul style="list-style-type: none"> • Air • Biodiversity • Climate factors • Cultural heritage and the landscape • Flora and fauna • Material assets • Population and human health • Soil • Water 	The Bosbury neighbourhood Area is not within or adjacent to the Malvern Hills AONB.
Wye Valley AONB management Plan 2009-2014	Corporate	2009	The Management Plan is the prime document which sets out the vision for the area and the priorities for its management.		<ul style="list-style-type: none"> • Air • Biodiversity • Climate factors • Cultural heritage and the landscape • Flora and fauna • Material assets • Population and human health • Soil • Water 	The Bosbury Plan neighbourhood Area is not within or adjacent to the Wye Valley AONB.

Plans and Programmes	Type of document	Date	Overview	Key message, target/objective/indicator	SEA topic(s) ¹	Implications for the NDP and SEA
Herefordshire Economic Development Strategy 2011-2016	Corporate	2011	Aims to increase the economic wealth of Herefordshire by setting out proposals and to support business growth up to 2016.	<p>The document outlines the path and direction to foster economic vitality within Herefordshire. Key objectives therefore include:</p> <ul style="list-style-type: none"> • Sustaining business survival and growth • Increasing wage levels, range and quality of jobs • Having a skilled population to meet future work needs • Developing the county's built infrastructure so enterprise can flourish. 	<ul style="list-style-type: none"> • Cultural heritage and the landscape • Material assets • Population and human health 	None of merit.

Plans and Programmes	Type of document	Date	Overview	Key message, target/objective/indicator	SEA topic(s) ¹	Implications for the NDP and SEA
Herefordshire Employment Land Study	Evidence	2012	Includes employment land assessments for the plan period 2011-2031. The study includes Quantitative and Qualitative assessments of employment land, assessment of market demand and need, as well as providing forecasts and recommendations for future employment need over the plan period.	<p>This study covers existing employment sites in Hereford, the five market towns and their rural hinterlands.</p> <p>There are no employment land allocations within Bosbury at present and so the study does not identify sites which are worthy of continued protection from alternative uses. Nor does it make any recommendations in respect of employment need within the neighbourhood area.</p>	<ul style="list-style-type: none"> • Material assets • Population and human health 	None of merit; however the NDP process may have to explore whether there is any employment need locally and if so whether there is any scope for providing employment land and premises.

Plans and Programmes	Type of document	Date	Overview	Key message, target/objective/indicator	SEA topic(s) ¹	Implications for the NDP and SEA
Herefordshire Strategic Housing Land Availability Assessment (SHLAA)	Evidence	2009	<p>The SHLAA aims to justify site allocations in plans by:</p> <ul style="list-style-type: none"> Identifying sites which are capable of delivering housing development Assessing sites for their housing potential; and Predicting when a site could be developed for housing. 	<p>In terms of Bosbury the 2009 SHLAA identifies that:</p> <ul style="list-style-type: none"> There is one site identified with minor constraints, with a potential of 6 units. There are two sites identified with significant constraints with a potential of 37 units There are six sites that have been rejected for a potential housing site. 	<ul style="list-style-type: none"> Air Biodiversity Climate factors Cultural heritage and the landscape Flora and fauna Population and human health Soil Water 	<p>The SHLAA assesses the potential availability of land for housing in Bosbury.</p> <p>The Bosbury NDP should be informed by the findings of the SHLAA.</p>

Plans and Programmes	Type of document	Date	Overview	Key message, target/objective/indicator	SEA topic(s) ¹	Implications for the NDP and SEA
Herefordshire Local Housing Market Assessment (LHMA)	Evidence	2013	Builds on an earlier Strategic Housing Market Assessment (SHMA) developed for Herefordshire and Shropshire. Its purpose is to inform the Local Plan's policies regarding housing need and demand (for market and affordable housing) within each of the 7 Housing Market Areas (HMAs) in Herefordshire between 2011 and 2031.	<p>Bosbury falls within the Ledbury HMA. Here, the study reveals that:</p> <ul style="list-style-type: none"> • 53% of households are unable to afford market housing. • There is an annual requirement for 90 affordable dwellings between 2012 and 2017. <p>The study identifies that, in rural parts of Ledbury LHMA, between 2011-2031 there is a need for:</p> <ul style="list-style-type: none"> • 339 market houses • 226 affordable houses. <p>The study highlights that within the Ledbury HMA the overall estimated housing need by size 2012-2017 is as follows: 1 Bed - 46.8%, 2 bed - 22.3%, 3 bed – 22.7%, 4 bed-8.2%.</p>	<ul style="list-style-type: none"> • Air • Biodiversity • Climate factors • Cultural heritage and the landscape • Flora and fauna • Population and human health • Soil • Water 	<p>The LHMA provides an indication of housing needs and affordability within the Ledbury HMA.</p> <p>It provides evidence that could be used to inform policies or market and affordable housing requirements in the NDP.</p>

This document is copyright of Herefordshire Council, please contact the Neighbourhood Planning team if you wish to reuse it in whole or part.

Plans and Programmes	Type of document	Date	Overview	Key message, target/objective/indicator	SEA topic(s) ¹	Implications for the NDP and SEA
Herefordshire Local Housing Requirements Study	Evidence	2012	Technical assessment of the housing market and potential future local housing requirements which supports planning policy regarding the amount of growth, housing tenure and housing type needed within Herefordshire up to 2031.	<p>The delivery of 5,300 homes in the rural areas would:</p> <ul style="list-style-type: none"> • Support growth in the rural population by 6% • Increase the number of households by 14.5% <p>Forecasts also predict that growth in the population of the rural areas is likely to be primarily through an increase in those aged over 75.</p> <p>Moderate growth is expected in the 30-44 and 60-74 age brackets.</p> <p>The Local Housing Requirements Study therefore anticipates continuing improvements in life expectancy; significant growth is expected of those in their 80s, with the existing population in their 40s and 50s moving into retirement. As a consequence, the rural areas will face an increasing urgency to</p>	<ul style="list-style-type: none"> • Air • Biodiversity • Climate factors • Cultural heritage and the landscape • Flora and fauna • Material assets • Population and human health • Soil • Water 	<p>This study provides an indication of housing requirements in the rural areas and the Ledbury HMA.</p> <p>This evidence can be used to inform the content of the Bosbury NDP, which could include policies to facilitate the provision of the right types of homes in the right places.</p>

This document is copyright of Herefordshire Council, please contact the Neighbourhood Planning team if you wish to reuse it in whole or part.

Plans and Programmes	Type of document	Date	Overview	Key message, target/objective/indicator	SEA topic(s) ¹	Implications for the NDP and SEA
				provide more 3 bedroom homes, with more 1 and 2 bed homes required in the affordable sector.		
Herefordshire Rural Housing Background Report	Evidence	2013	Provides the justification for the proportional housing growth targets outlined in the Core Strategy	The village of Bosbury is categorised as an RA1 settlement, which means it is considered a sustainable location for proportional growth of up to 14%.	<ul style="list-style-type: none"> • Air • Biodiversity • Climate factors • Cultural heritage and the landscape • Flora and fauna • Material assets • Population and human health • Soil • Water 	The Bosbury NDP will need to be in conformity with the provisions of Policy RA1.

Plans and Programmes	Type of document	Date	Overview	Key message, target/objective/indicator	SEA topic(s) ¹	Implications for the NDP and SEA
Herefordshire Draft Gypsies and Travellers Assessment	Evidence	2013	Assesses the accommodation needs of Gypsies and Travellers across Herefordshire.	<p>Key findings from the survey of Gypsy and Traveller households in 2012 found that:</p> <ul style="list-style-type: none"> • 31% of households surveyed have some sort of accommodation need • Of the 17 households with an accommodation need, 7 had a requirement for at least one additional pitch • 10 households had a requirement for bricks and mortar housing • There is an additional requirement for 7 pitches and 9 units of Registered Social Landlord accommodation within Herefordshire. 	<ul style="list-style-type: none"> • Air • Biodiversity • Climate factors • Cultural heritage and the landscape • Flora and fauna • Material assets • Population and human health • Soil • Water 	The Bosbury NDP must establish whether any of the need identified in this assessment falls within the neighbourhood area and make appropriate provisions for it.

Plans and Programmes	Type of document	Date	Overview	Key message, target/objective/indicator	SEA topic(s) ¹	Implications for the NDP and SEA
Herefordshire Local Biodiversity Action Plan	Evidence	2007	Focuses conservation efforts on the areas within Herefordshire that will result in the greatest benefit for ecological networks, habitats and species.	Integrating biodiversity objectives with other environmental, social and economic needs can provide a sustainable living and working environment that benefits both people and nature.	<ul style="list-style-type: none"> • Biodiversity 	The NDP can help to achieve the LBAP priorities.
Building Biodiversity into the LDF	Evidence	2009	Provides the Council's Local Plan (Core Strategy) with evidence in respect of biodiversity and geodiversity, identifying both opportunities and constraints across Herefordshire.	This document provides useful information in respect of Hereford and the market towns only.	<ul style="list-style-type: none"> • Air • Biodiversity • Climate factors • Cultural heritage and the landscape • Flora and fauna • Material assets • Population and human health • Soil • Water 	There is a lack of information about rural areas which means it will be necessary to gather and assess existing biodiversity and geodiversity data, in order to ensure that the Bosbury NDP can overcome any existing constraints and capitalise on opportunities to enhance habitats and their networks.

Plans and Programmes	Type of document	Date	Overview	Key message, target/objective/indicator	SEA topic(s) ¹	Implications for the NDP and SEA
Herefordshire Green Infrastructure Strategy	Evidence	2010	Develops a framework of natural and culturally important features and functions so that planning for a sustainable future is at the heart of planning within Herefordshire.	Establishes policies and principles for the protection and enhancement of those features and functions that contributes to the environment of Herefordshire across a range of scales.	<ul style="list-style-type: none"> • Air • Biodiversity • Climate factors • Cultural heritage and the landscape • Flora and fauna • Material assets • Population and human health • Soil • Water 	The study provides evidence that could be taken into account when preparing policies for the Bosbury NDP.
Renewable Energy Study	Evidence	2010	Assesses the energy demand within Herefordshire and the ability for the county to accommodate renewable and low carbon energy technologies.	<p>The total energy demand excluding transport for Herefordshire, at that point in time, was calculated as being:</p> <ul style="list-style-type: none"> • Electrical: 731 GWh/yr • Heat: 1,810 GWh/yr • Total: 2,541 GWh/yr <p>There is scope for all types of renewable energy production.</p>	<ul style="list-style-type: none"> • Air • Biodiversity • Climate factors • Cultural heritage and the landscape • Flora and fauna • Material assets • Population and human health • Soil • Water 	The study provides evidence that could be taken into account when preparing policies for the Bosbury NDP.

Plans and Programmes	Type of document	Date	Overview	Key message, target/objective/indicator	SEA topic(s) ¹	Implications for the NDP and SEA
Herefordshire Playing Pitch Assessment	Evidence	2012	Produces a strategic framework, audit and assessment and needs analysis of outdoor sports pitches and facilities for Herefordshire. The document arises as a result of a recommendation in the Herefordshire and Worcestershire Sports Facilities Framework to develop local standards for playing fields and sports pitches throughout Herefordshire.	<p>The study updates components of the Herefordshire and Worcestershire Sports Facilities Framework 2010 such as updating population forecasts, setting local standards for synthetic turf pitches and grass playing fields within Herefordshire. It identifies any current gaps in provision, and looks forward to 2031 to assess what facilities are likely to be required by that date.</p> <p>In terms of Bosbury parish itself, the study reveals that there is:</p> <ul style="list-style-type: none"> • Bosbury has 1.5ha of playing pitch with 100% secured community access (Cricket only). This currently rated in a good condition. • Bosbury primary school has a junior football pitch but is currently not in use. 	<ul style="list-style-type: none"> • Biodiversity • Cultural heritage and the landscape • Flora and fauna • Material assets • Population and human health 	<p>The study provides evidence that could be taken into account when preparing policies for the Bosbury NDP.</p> <p>Additional local evidence may be required to identify if there is a need for any secured playing pitch facilities within the Group Parish.</p>

This document is copyright of Herefordshire Council, please contact the Neighbourhood Planning team if you wish to reuse it in whole or part.

Plans and Programmes	Type of document	Date	Overview	Key message, target/objective/indicator	SEA topic(s) ¹	Implications for the NDP and SEA
Open Spaces Study	Evidence	2006	The 2006 space audit and assessment of need is a snap shot of the quality, quantity and distribution of open space across Herefordshire.	<p>The study reveals that within the Ledbury area, to which Bosbury is a part, there is:</p> <ul style="list-style-type: none"> • Extensive under provision of parks and gardens and outdoor Sport. • Extensive over provision of natural and semi natural greenspace. 	<ul style="list-style-type: none"> • Biodiversity • Climate factors • Cultural heritage and the landscape • Flora and fauna • Material assets • Population and human health 	The open space audit and assessment of does not give a specific indication of open space shortfalls and surpluses in Bosbury

Plans and Programmes	Type of document	Date	Overview	Key message, target/objective/indicator	SEA topic(s) ¹	Implications for the NDP and SEA
Play Facilities Study	Evidence	2012	The Play Facilities Study 2012 updates the previous play facilities analysis under the Open Spaces Study 2006 and provides guidance and a framework for the development, delivery and continued sustainability of providing new and improved play facilities for children and young people in Herefordshire to 2031.	The study reveals that there is no formal play facility within Bosbury.	<ul style="list-style-type: none"> • Biodiversity • Climate factors • Cultural heritage and the landscape • Flora and fauna • Material assets • Population and human health 	The study provides evidence that could be taken into account when preparing policies for the Bosbury NDP.

Plans and Programmes	Type of document	Date	Overview	Key message, target/objective/indicator	SEA topic(s) ¹	Implications for the NDP and SEA
Strategic Flood Risk Assessment (SFRA) and Water Cycle Study	Evidence	2009	<p>The Strategic Flood Risk Assessment (SFRA) provides a summary of flood risk in Herefordshire to inform the location of future development.</p> <p>The Water Cycle Study examines how water resources and water supply infrastructure, wastewater treatment, water quality, sewerage and flood risk could constrain growth across Herefordshire.</p>	<p>Bosbury falls within the Upper Leadon catchment</p> <p>Upper Leadon has a 35-40% standard run percentage run off by sub catchment. This is potentially highly unsuitable for infiltration source control.</p> <p>Upper Leadon catchment has a moderately rapid peak response time of 5-7 hours.</p> <p>The WCS identifies that the River Leadon is designated as Sensitive Waters (susceptible to eutrophication) under the Urban Wastewater Treatment Directive. The Leadon is classified as ecologically poor.</p>	<ul style="list-style-type: none"> • Biodiversity • Climate factors • Material assets • Population and human health • Water 	<p>New development proposed through the Bosbury NDP should be assessed against the capacity of local infrastructure.</p> <p>Up-to-date flood risk information should be gathered from the Environment Agency, in order to ensure that any flood risks are considered when preparing the Bosbury NDP.</p>

This document is copyright of Herefordshire Council, please contact the Neighbourhood Planning team if you wish to reuse it in whole or part.

Plans and Programmes	Type of document	Date	Overview	Key message, target/objective/indicator	SEA topic(s) ¹	Implications for the NDP and SEA
Bosbury and Coddington Parish Plan 2010	Evidence	2010	Commissioned by Bosbury and Coddington Parish Plan committee based on the views contributed by people living or working in the parishes of Bosbury and Coddington. Sets out the vision, objectives and policies for the parishes of Bosbury and Coddington.	Determined key findings and objectives for: Crime and safety Education, Environment, Facilities and Services, Housing and Planning, Leisure and Tourism, Traffic, transport and access.	<ul style="list-style-type: none"> • Biodiversity • Climate factors • Cultural heritage and the landscape • Flora and fauna • Material assets • Population and human health 	The NDP should take account of relevant objectives set within the Parish Plan which was adopted by the Parish Council in 2010.(Forms the basis of some actions over the next 1-5 years)

Appendix A2 – Baseline information for Bosbury

N.B. This is based on countywide baseline information with some additions relevant to Bosbury (in red). Where no locally specific data is available for current status, trends and targets, only countywide data is reported. Any gaps in data may be filled following additional research.

SA Objective ¹	SA Theme	Proposed indicator	Current status	Trends	Targets	Issues and constraints	Baseline (information) source
SEA Topic covered by objective: <i>Biodiversity, flora and fauna</i>							
13. Value, maintain, restore and expand county biodiversity.	Natural environment	Net change in condition of SSSIs across Herefordshire.	<p>The 2011-2013 AMR does not contain updated conservation data.</p> <p>2010/11: 27% of Herefordshire's SSSI land was in favourable condition.</p> <p>Within Bosbury there are 3 SSSIs. Birchend (Favourable (part) Unfavourable Recovering (part))(border); Bank & Cother Wood (Favourable (part) Unfavourable recovering (part) (border); Malvern</p>	<p>2006: 22% 2007: 22% 2008: 22% 2010: 24 %</p> <p>Proportion of SSSI land that was in unfavourable condition but recovering increased between 2010 and 2012 going from 41% to 65%. Proportion in unfavourable and declining condition had also decreased from 4% to 1%.</p>	<p>% of SSSI land in favourable condition (Increase)</p> <p>% of SSSI land in unfavourable condition but recovering (Increase)</p> <p>% of SSSI land in unfavourable condition and declining (Decrease)</p>	<p>Herefordshire's SSSIs are in extremely poor condition relative to England as whole, where 96.1% of all SSSI land was in favourable condition in April 2014.</p> <p>The proportion of SSSI in unfavourable condition but recovering is greater than England as a whole, where the figure currently stands at 58.6%.</p>	<p>Understanding Herefordshire: An integrated needs assessment (June 2013).</p> <p>NE & DEFRA Website July 2014</p>

¹ Derived from the Pre Submission Core Strategy Sustainability Appraisal Assessment (May 2014)

SA Objective ¹	SA Theme	Proposed indicator	Current status	Trends	Targets	Issues and constraints	Baseline (information) source
			Hills (Favourable (part) Unfavourable Recovering (part)) (border)				
13. Value, maintain, restore and expand county biodiversity.	Natural environment	After use of mineral sites especially wildlife habitat creation	<i>There is no countywide or locally specific data available at present.</i>	-	Percentage of opportunities taken	Should be monitored through AMR following the adoption of the Core Strategy, in line with SA recommendations.	-

SA Objective ¹	SA Theme	Proposed indicator	Current status	Trends	Targets	Issues and constraints	Baseline (information) source
13. Value, maintain, restore and expand county biodiversity.	Natural environment	Phosphate levels within the River Wye SAC and adjoining tributaries that receive increased phosphates from proportional growth.	Countywide data is available, but this would not apply to this Neighbourhood Area, as the parish falls outside the hydrological catchment area for the River Wye SAC. The parish falls within the Upper River Leadon Sub catchment.	The River Wye SAC was subject to a review of consents in 2010, as a number of sections of the river were found to have greater phosphate levels than those identified in Natural England's favourable condition tables.	The roll out of the Nutrient Management Plan will determine future targets.	New development within the area could lead to the water quality failing the phosphate levels and conservation objectives.	Nutrient Management Plan (2014)

SA Objective ¹	SA Theme	Proposed indicator	Current status	Trends	Targets	Issues and constraints	Baseline (information) source
13. Value, maintain, restore and expand county biodiversity.	Natural environment	Changes to protected habitats and impacts of species within the Herefordshire Local Biodiversity Action Plan.	<p>The 2011-2013 AMR does not contain updated conservation data.</p> <p>2010/11: 17 Habitat Action Plans and 14 Species Action Plans are currently in operation across Herefordshire.</p>	<p>There are no formal records of any unacceptable adverse impacts on habitats or protected species.</p> <p>Originally 156 Priority Species were identified for inclusion in Herefordshire's LBAP.</p> <p>Similarly Herefordshire's LBAP covered 23 habitats with Action Plans.</p>	<p>To protect and where possible enhance the habitats of protected species identified.</p> <p>No net losses.</p>	Herefordshire Biological Records Centre (HBRC) holds limited data on some individual sites.	Herefordshire Council AMR (2010/11)

SA Objective ¹	SA Theme	Proposed indicator	Current status	Trends	Targets	Issues and constraints	Baseline (information) source
13. Value, maintain, restore and expand county biodiversity.	Natural environment	Changes in the areas of designated nature conservation sites as a consequence of planning permission.	Bosbury has: SSSI: 3 SWS: 24 RIGs:4 1 Geopark: Malvern Hills. There are no SACs, NNRs, SINC and LNRs within the parish.	As of 2012, there had been no change in the areas of designated nature conservation sites as a consequence of the planning permissions granted.	To capitalise on opportunities to enhance the areas of value to nature conservation as much as possible.	Herefordshire Biological Records Centre (HBRC) holds limited data on some individual sites.	Herefordshire Council Initial Screening Report for the Neighbourhood Plan 2013
13. Value, maintain, restore and expand county biodiversity.	Natural environment	Proportion of local sites where positive conservation management has or is being implemented.	The Parish Area has the following landscape types: Settled farmlands Principled settled farmlands Ancient bordered farmlands	-	No specific targets identified.	Should be monitored through AMR following the adoption of the Core Strategy, in line with SA recommendations.	Herefordshire Landscape Character Assessment (2004 updated 2009)
SEA Topic covered by objectives: <i>Material assets</i>							
14. Use natural resources and energy more efficiently.	Resource consumption and climate change	Maintaining Herefordshire Council's County Site and	Countywide data would be too large to incorporate into this template.	-	No specific targets identified, but need to ensure that the	Should be monitored through AMR following the adoption of the Core Strategy, in	Herefordshire Environmental Records Register (search August

SA Objective ¹	SA Theme	Proposed indicator	Current status	Trends	Targets	Issues and constraints	Baseline (information) source
		Monuments Register.	Whilst there is no qualitative, locally specific data available at present, there are numerous scheduled monuments in Bosbury according to the latest version of the register.		register is kept up to date.	line with SA recommendations.	2014).
14. Use natural resources and energy more efficiently.	Resource consumption and climate change	Monitoring changes to historic landscapes.	<p>Historic Landscape Character assessments have only been undertaken for Hereford City.</p> <p>Rapid townscape Assessments (2010) were only undertaken for Hereford, Ledbury and Ross.</p>	-	No specific targets identified.	Should be monitored through AMR following the adoption of the Core Strategy, in line with SA recommendations.	<p>Historic Landscape Character Assessment for Hereford.</p> <p>Rapid townscape Assessments (2010)</p>

SA Objective ¹	SA Theme	Proposed indicator	Current status	Trends	Targets	Issues and constraints	Baseline (information) source
SEA Topic covered by objective: <i>Population, Biodiversity, Flora and Fauna</i>							
15. Value, protect, enhance and restore the landscape quality of Herefordshire, including its rural areas and open spaces.	Natural environment	Number of developments meeting and surpassing national design standards.	<i>There is no countywide or locally specific data available at present.</i>	-	No specific targets identified.	Should be monitored through AMR following the adoption of the Core Strategy, in line with SA recommendations.	-

SA Objective ¹	SA Theme	Proposed indicator	Current status	Trends	Targets	Issues and constraints	Baseline (information) source
15. Value, protect, enhance and restore the landscape quality of Herefordshire, including its rural areas and open spaces.	Natural environment	The need for, frequency and outcomes of planning enforcement investigations/ planning appeals concerning the aspects of local loss of heritage assets and locally important buildings particularly within a conservation area	Countywide data would be too large to incorporate into this template. There are no outstanding enforcement actions or appeals concerning the aspects of local loss of heritage assets, and locally important buildings within a conservation area at present.	No historic records of any planning enforcement action or appeals concerning locally important buildings within the one conservation area.	To maintain current status.	Current status must be verified by Dvt Mgt and Enforcement Officers, but the NDP can help to avoid enforcement action and appeals during the plan period.	Council Dvt Mgt records (searched August 2014)
SEA Topic covered by objective: <i>Climatic Factors</i>							

SA Objective ¹	SA Theme	Proposed indicator	Current status	Trends	Targets	Issues and constraints	Baseline (information) source
16. Reduce Herefordshire's vulnerability to the impacts of climate change as well as its contribution to the problem.	Resource consumption and climate change.	Transport patronage by mode	<p>% of Herefordshire residents who travel to work by:</p> <p>Car: 70.1% Foot: 14.7% Bicycle: 4.3% Bus: 2% Train: 0.8% Motorbike: 0.8% Taxi: 0.3% Other: 7%</p> <p><i>There is no locally specific data available at present</i></p>	The number of people cycling or travelling by bus as the main form transport to get to work declined between 2001 and 2011 – across England and Wales there was little change in either. Walking or driving a car or van on the other hand increased.	To encourage the take up of lesser polluting modes of transport.	There are a lack of transport options for many rural communities and therefore high car ownership and dependency – the last decade has seen a 15 per cent increase in household car ownership, although this is not reflected in traffic flows of recent years with volumes in Hereford City and wider county having decreased. The proportion of people working from home increased over the decade from 15 per cent in 2001 to 17 per cent in 2011.	2011 Census

SA Objective ¹	SA Theme	Proposed indicator	Current status	Trends	Targets	Issues and constraints	Baseline (information) source
16. Reduce Herefordshire's vulnerability to the impacts of climate change as well as its contribution to the problem.	Resource consumption and climate change.	Number of decentralised energy schemes granted permission.	<i>There is no countywide or locally specific data available at present.</i>	-	To contribute towards the national target.	Should be monitored through AMR following the adoption of the Core Strategy, in line with SA recommendations.	-

SA Objective ¹	SA Theme	Proposed indicator	Current status	Trends	Targets	Issues and constraints	Baseline (information) source
16. Reduce Herefordshire's vulnerability to the impacts of climate change as well as its contribution to the problem.	Resource consumption and climate	Total CO2 emissions per capita	<p>Latest figure dates back to 2010: 1.61 million tonnes (mtCO₂)</p> <p><i>There is no locally specific data available at present.</i></p>	<p>Between 2005 and 2010 Herefordshire's total and per capita carbon emission reduced by 7% and 8% respectively; while UK's total and per capita carbon emission reduced by 8% and 12% respectively within the same period. This trend hides an increase in emissions between 2009 and 2010 when total emissions in the county increased by 5% the same as across the UK (+5%).</p>	To reduce the overall carbon emissions.	CO ₂ emissions produced are decreasing.	Understanding Herefordshire: An integrated needs assessment (June 2013).

SA Objective ¹	SA Theme	Proposed indicator	Current status	Trends	Targets	Issues and constraints	Baseline (information) source
SEA Topic covered by objective: <i>Water</i>							
17. Reduce the risk of flooding and the resulting detriment to public wellbeing, the economy and the environment.	Natural environment	Number of planning permissions granted contrary to the advice of the Environment Agency on flood defence grounds.	The 2011-2013 AMR does not contain updated conservation data. 2010/11: None <i>There is no locally specific data available at present.</i>	There have been no approvals contrary to EA advice since reporting began in 2004.	To have no applications permitted contrary to EA advice.	None identified.	Herefordshire Council AMR (2010/11)
SEA Topic covered by objective: <i>Water, air, soil, material assets</i>							
18. Minimise local and global pollution and protect or enhance environmental resources.	Natural environment	Agricultural land usage by quality . LA to monitor the number of hectares of the best and most versatile agricultural land (grades 3a and higher) lost to development.	<i>Within Bosbury there is grade 3 in the north (good to moderate) and grade 1 (excellent in the south, leaving the rest of Bosbury with grade 2 land (very good).</i>	-	Measure the number of hectares of best and most versatile soil lost through development.	Should be monitored through AMR following the adoption of the Core Strategy, in line with SA recommendations.	DEFRA 'Magic' website for land classification

SA Objective ¹	SA Theme	Proposed indicator	Current status	Trends	Targets	Issues and constraints	Baseline (information) source
18. Minimise local and global pollution and protect or enhance environmental resources.	Natural environment	Percentage of river length assessed as good or very good chemical quality and ecological quality as required by the Water Framework Directive	Latest figure dates back to 2005: 84% <i>There is no locally specific data available at present.</i>	Figure steadily improved before going into decline: Herefordshire 1999 85.9%, 2000 89.5%, 2001 92.2%, 2002 91.8%	To ensure that rivers meet their conservation objectives and do not fall below the required standard of quality.	None identified.	The State of Herefordshire (2007) Water Framework Directive (2000)
SEA Topic covered by objective: <i>Soil</i>							
19. Ensure integrated, efficient and balanced land use.	Built environment	Percentage of all new development completed on previously developed land.	2010/11: 67% 2011-13: 57% <i>There is no locally specific data available at present.</i>	Completions on PDL had risen to 71% by 2005.	To increase the number of homes built on PDL in line with the provisions of national planning policy.	The number of brownfield completions has fallen slightly in recent years, though this is probably the offshoot of tough market conditions.	Herefordshire Council AMR (2010/11) and (2011-2013)

SA Objective ¹	SA Theme	Proposed indicator	Current status	Trends	Targets	Issues and constraints	Baseline (information) source
19. Ensure integrated, efficient and balanced land use.	Built environment	Housing densities in urban and rural areas	<i>There is no countywide or locally specific data available at present.</i>	-	No specific targets identified.	Should be monitored through AMR following the adoption of the Core Strategy, in line with SA recommendations.	-
19. Ensure integrated, efficient and balanced land use.	Built environment	Level of development in urban areas compared to rural.	<i>There is no countywide or locally specific data available at present.</i> This indicator would not be applicable to rural NDPs.	N/A	N/A	N/A	N/A
SEA Topic covered by objective: <i>Cultural heritage</i>							

SA Objective ¹	SA Theme	Proposed indicator	Current status	Trends	Targets	Issues and constraints	Baseline (information) source
20. Value, protect and enhance the character and built quality of settlements and neighbourhoods and the county's heritage assets, including conservation areas, historic environment and cultural heritage.	Built environment	Number and percentage of listed buildings and Scheduled Ancient Monuments on Buildings at Risk Register (English Heritage).	Up-to-date countywide information will be presented in the next AMR and which is due to be published in 2014. However, this data would be too large to incorporate into this template. There are numerous listed buildings within the parish and two SAMs. None are currently recorded in the Buildings at Risk Register.	There were 70 heritage assets in Herefordshire that were considered to be at high risk and included in the Heritage at Risk Register 2014.	To wherever possible improve upon or otherwise maintain current status..	None of Bosbury listed buildings or SAMs are considered to be at risk at present.	Buildings at Risk Register (English Heritage; search August 2014)

SA Objective ¹	SA Theme	Proposed indicator	Current status	Trends	Targets	Issues and constraints	Baseline (information) source
20. Value, protect and enhance the character and built quality of settlements and neighbourhoods and the county's heritage assets, including conservation areas, historic environment and cultural heritage.	Built environment	The need for, frequency and outcomes of planning enforcement investigations/ planning appeals concerning the aspects of local loss of heritage assets locally important buildings within the parish and particularly within a conservation area.	Countywide data would be too large to incorporate into this template. There are no outstanding enforcement actions or appeals concerning locally important buildings within Bosbury at present.	No historic records of any planning enforcement action or appeals concerning locally important buildings within the one conservation area.	To wherever possible improve upon or otherwise maintain current status.	Current status must be verified by Dvt Mgt and Enforcement Officers, but the NDP can help to avoid enforcement action and appeals during the plan period.	Council Dvt Mgt records (searched August 2014)

Appendix A3 – Environmental issues identified from the Bosbury Group baseline

These environmental issues are the same as most of those identified for the Herefordshire Core Strategy¹

SEA Topic		Environmental issue	SA objectives
1	Air	High reliance upon the private car causing high levels of air pollution and in Hereford in particular	Objective 16
		Need to reduce carbon emissions by encouraging alternative modes of travel.	
2	Biodiversity	Habitats and species of national, regional and local importance are under pressure from the adaptation and diversification of farming and forestry employment.	Objectives 13 & 15
		Habitats and species of national, regional and local importance are under pressure from development	
		Minimise loss of biodiversity and expand opportunities for wildlife everywhere.	
3	Climatic factors	Reduce greenhouse gas emissions through planning, design and build.	Objective 16
4	Cultural heritage	Bosbury has two Scheduled Ancient Monuments and numerous listed buildings, all of which require ongoing protection and many in need of high levels of maintenance.	Objective 20
5	Flora and fauna	Conserve and enhance the character and quality of historic landscapes, including all types of natural flora and fauna.	Objective 15
6	Material assets	How the countryside can continue to be managed in an economically, socially and environmentally beneficial way in the face of continuing pressures on traditional farming.	Objectives 14 & 18
7	Population	Minimise energy waste through good designs, which help to reduce energy consumption and maximise efficiency.	Objective 15
		Need to avoid enforcement investigations/action concerning locally important buildings and those within conservation areas in particular.	
8	Soil	Promoting development of previously developed land and buildings as opposed to greenfield sites or agricultural land of the highest quality.	Objectives 18 & 19

¹ Derived from the Pre-submission Core Strategy Sustainability Appraisal Assessment (May 2014) and LDF General Scoping Report (June 2007)

9	Water	Issues relating to availability of resources, foul drainage, pollution, and abstraction in a county which supports water dependent biodiversity of international and national importance, given the predicted climate change consequences for water availability and demanding projections for new housing.	Objectives 17 & 18
		Steady decline in the chemical quality of rivers over the last 10 years.	

Template A4: SEA Framework

SEA Scoping Stage A, Task A4 - SEA Framework SEA Objectives, Indicators, Targets

Parish Council Name: Bosbury Group

Neighbourhood Development Plan Name: Bosbury Plan

Date completed: August 2014

SEA Topics	SA Objective	SEA Objective	Sub-objectives / Appraisal Questions (Will the option/proposal/site...)	Indicators	Targets
Nature Conservation (Biodiversity, flora and fauna)	Value, maintain, restore or expand county biodiversity. Value, protect, enhance or restore the landscape quality of Herefordshire, including its rural areas and open spaces.	To maintain and enhance nature conservation (biodiversity, flora and fauna)	<ul style="list-style-type: none"> Protect or enhance habitats of international, national, regional or local importance. Protect international, national, regional or locally important terrestrial or aquatic species. Maintain wildlife corridors and minimise fragmentation of ecological areas and green spaces. Manage access to sites in a sustainable way that protects or enhances their nature conservation value. Create new appropriate habitats. Value, enhance and protect natural environmental assets including AONB's, historic landscapes, open spaces, parks and gardens and their 	<p>Net change in condition of SSSIs across Herefordshire.</p> <p>After use of mineral sites especially wildlife habitat creation</p> <p>Changes to protected habitats and impacts of species within the Herefordshire Local Biodiversity Action Plan.</p>	<p>% of SSSI land in favourable condition (Increase) % of SSSI land in unfavourable condition but recovering (Increase) % of SSSI land in unfavourable condition and declining (Decrease)</p> <p>Percentage of opportunities taken</p> <p>To protect and where possible enhance the habitats of protected species identified. No net losses</p>

SEA Topics	SA Objective	SEA Objective	Sub-objectives / Appraisal Questions (Will the option/proposal/site...)	Indicators	Targets
			<p>settings</p> <ul style="list-style-type: none"> • Encourage local stewardship of local environments, for example by promoting best practices in agricultural management • Ensure that environmental impacts caused by mineral operations and the transport of minerals are minimised. • Promote the use of rural areas and open space by all, encourage easy non-car based access, and accommodate the needs of disabled users. 		
Landscape	Not covered in SA	<p>To maintain and enhance the quality of landscapes and townscapes</p> <p>To improve quality of surroundings</p>	<ul style="list-style-type: none"> • Protect and enhance the landscape everywhere and particularly in designated areas • Value and protect diversity and local distinctiveness • Improve landscape and ecological quality and character of the countryside • Improve the quantity and quality of publicly accessible open space • Improve satisfaction of people with their neighbourhoods as places to live 	<p>Changes in the areas of designated nature conservation sites as a consequence of planning permission.</p> <p>Proportion of local sites where positive conservation management has or is being implemented.</p> <p>Monitoring changes to historic landscapes.</p> <p>Area resulting in a loss of open space as a result of planning permission</p>	<p>To capitalise on opportunities to enhance the areas of value to nature conservation as much as possible.</p> <p>No specific targets identified.</p> <p>No specific targets identified.</p> <p>No specific targets identified</p>

SEA Topics	SA Objective	SEA Objective	Sub-objectives / Appraisal Questions (Will the option/proposal/site...)	Indicators	Targets
			<ul style="list-style-type: none"> Decrease litter and graffiti in towns and countryside Result in the loss of open space 		
Heritage	Value, protect or enhance the character and built quality of settlements and neighbourhoods and the county's heritage assets, historic environment and cultural heritage.	To conserve and where appropriate enhance the historic environment, heritage assets and culture heritage	<ul style="list-style-type: none"> Preserve, protect and enhance heritage assets including conservation areas, listed buildings, archaeological sites and other culturally important features in both urban and rural settings. Prevent development which is inappropriate in scale, form or design to its setting or to its function or local area. Encourage development that creates and sustains well-designed, high quality built environments that incorporate green space, encourage biodiversity and promote local distinctiveness and sense of place. Encourage cleanliness and/or improve the general appearance of the area. 	<p>The need for, frequency and outcomes of planning enforcement investigations/ planning appeals concerning the aspects of local loss of locally important buildings within a conservation area.</p> <p>Number and percentage of listed buildings and Scheduled Ancient Monuments on Buildings at Risk Register (English Heritage).</p> <p>Ensure that Herefordshire Council's Sites and Monuments Register is kept up to date.</p>	<p>To improve upon or otherwise maintain current status.</p> <p>To improve upon or otherwise maintain current status.</p> <p>No specific targets identified, but need to ensure that the register is kept up to date.</p>

SEA Topics	SA Objective	SEA Objective	Sub-objectives / Appraisal Questions (Will the option/proposal/site...)	Indicators	Targets
Air and Climate	<p>Minimise local and global pollution and protect or enhance environmental resources.</p> <p>Reduce Herefordshire's vulnerability to the impacts of climate change as well as its contribution to the problem.</p>	<p>To improve air quality</p> <p>To reduce the effect of traffic on the environment</p> <p>To reduce contributions to climate change</p> <p>To reduce vulnerability to climate change</p>	<ul style="list-style-type: none"> Minimise water, air, soil, groundwater, noise and light pollution from current activities and the potential for such pollution. Protect or enhance the quality of watercourses. Provide opportunities to improve soil quality or reduce contaminated land. Reduce the county's contribution to climate change by reducing greenhouse gas emissions from transport, domestic, commercial and industrial sources. Increase the proportion of energy generated from renewable and low carbon sources including by micro-generation, Combined Heat and Power (CHP), district heating and in transportation. 	<p>Transport patronage by mode</p> <p>Number of decentralised energy schemes granted permission.</p> <p>Total CO2 emissions per capita</p>	<p>To increase the take up of alternative modes to the private car.</p> <p>To contribute towards the national target.</p> <p>To reduce the overall carbon emissions.</p>

SEA Topics	SA Objective	SEA Objective	Sub-objectives / Appraisal Questions (Will the option/proposal/site...)	Indicators	Targets
Water	<p>Reduce the risk of flooding and the resulting detriment to public well-being, the economy and the environment.</p> <p>Minimise local and global pollution and protect or enhance environmental resources.</p>	<p>To improve water quality</p> <p>To provide for sustainable sources of water supply</p> <p>To avoid, reduce and manage flood risk</p>	<ul style="list-style-type: none"> • Reduce flood risk both presently and taking into account climate change. • Prevent inappropriate development of the floodplain, and include flood protection systems. • Include sustainable urban drainage systems where appropriate. • Minimise water, air, soil, groundwater, noise and light pollution from current activities and the potential for such pollution. • Protect or enhance the quality of watercourses. 	<p>Number of planning permissions granted contrary to the advice of the Environment Agency on flood defence grounds.</p> <p>Percentage of river length assessed as good or very good chemical quality and ecological quality</p> <p>Phosphate levels within the River Wye SAC and adjoining tributaries that receive increased phosphates from proportional growth.</p>	<p>To have no applications permitted contrary to EA advice.</p> <p>To ensure that rivers meet their conservation objectives and do not fall below the required standard of quality as set out in the Water Framework Directive.</p> <p>To meet the targets set out in the Nutrient Management Plan (2014)</p>
Soil	<p>Minimise local and global pollution and protect or enhance environmental resources.</p>	<p>To conserve soil resources and quality</p> <p>Ensure integrated, efficient and balanced land use.</p>	<ul style="list-style-type: none"> • Minimise water, air, soil, groundwater, noise and light pollution from current activities and the potential for such pollution. • Provide opportunities to improve soil quality or reduce contaminated land. 	<p>Percentage of all new development completed on previously developed land.</p> <p>Amount of land identified as best and most versatile agricultural land lost to development.</p>	<p>To increase the number of homes built on PDL in line with the provisions of national planning policy.</p> <p>Measure the number of hectares of best and most versatile soil lost through development.</p>

This document is copyright of Herefordshire Council, please contact the Neighbourhood Planning team if you wish to reuse it in whole or part.

SEA Topics	SA Objective	SEA Objective	Sub-objectives / Appraisal Questions (Will the option/proposal/site...)	Indicators	Targets
	Ensure integrated, efficient and balanced land use.		<ul style="list-style-type: none"> Ensure new developments are in appropriate locations, optimising the use of previously developed land and buildings, primarily focussed on the urban areas and are accessible by walking, cycling or sustainable transport and/or will increase the share of these transport modes, thereby reducing the need to travel. 		
Population and Human Health	Value, protect, enhance or restore the landscape quality of Herefordshire, including its rural areas and open spaces.	<p>To improve health of the population</p> <p>To reduce crime and nuisance</p>	<ul style="list-style-type: none"> Value, enhance and protect natural environmental assets including AONB's, historic landscapes, open spaces, parks and gardens and their settings. Encourage local stewardship of local environments, for example by promoting best practices in agricultural management. Ensure that environmental impacts caused by mineral operations and the transport of minerals are minimised. Promote the use of 	Number of developments meeting and surpassing national design	No specific targets identified.

SEA Topics	SA Objective	SEA Objective	Sub-objectives / Appraisal Questions (Will the option/proposal/site...)	Indicators	Targets
			rural areas and open space by all, encourage easy non-car based access, and accommodate the needs of disabled users.		
Material Assets	<p>Use natural resources and energy more efficiently.</p> <p>Minimise local and global pollution and protect or enhance environmental resources.</p>	To conserve natural and manmade resources	<ul style="list-style-type: none"> • Maximise energy efficiency and minimise the consumption of non-renewable energy i.e. from fossil fuels. • Minimise the consumption of water, land, soil, minerals, aggregates and other raw materials by all? E.g. through integrated transport, sustainable resource-efficient design, local sourcing of food, goods, materials. • Encourage the re-use/enhancement (to high standards of sustainable resource-efficient design) of existing buildings and minimise the need for new build. • Encourage the use of clean technologies and water minimisation techniques. 	<p>The need for, frequency and outcomes of planning enforcement investigations/ planning appeals concerning the aspects of local loss of locally important buildings within a conservation area.</p> <p>Maintaining Herefordshire Council's County Site and Monuments Register.</p> <p>Monitoring changes to historic landscapes.</p> <p>Agricultural land usage by quality</p>	<p>Measure the number of hectares of best and most versatile soil lost through development. No specific targets identified.</p> <p>No specific targets identified, but need to ensure that the register is kept up to date.</p> <p>No specific targets identified.</p> <p>Measure the number of hectares of best and most versatile soil lost through development.</p>

Appendix 3

Date: 13 October 2014
Our ref: 131806
Your ref: Bosbury & Catley Neighbourhood Area



Mr J. Latham
Technical Support Officer
Neighbourhood Planning, Strategic Planning & Conservation teams
Herefordshire Council
Planning Services,
Blueschool House,
Blueschool Street
Hereford,
HR1 2ZB

Customer Services
Hornbeam House
Crewe Business Park
Electra Way
Crewe
Cheshire
CW1 6GJ

T 0300 060 3900

BY EMAIL ONLY

Dear Mr Latham

Bosbury & Catley Neighbourhood Plan Strategic Environmental Assessment Scoping and Habitat Regulations Assessment Screening

Thank you for your consultation on the above dated and received by Natural England on 08 September 2014.

Natural England is a non-departmental public body. Our statutory purpose is to ensure that the natural environment is conserved, enhanced, and managed for the benefit of present and future generations, thereby contributing to sustainable development.

Where Neighbourhood Plans could have significant environmental effects, they may require a Strategic Environmental Assessment (SEA) under the Environment Assessment of Plans and Programmes Regulations 2004.

Further guidance on deciding whether the proposals are likely to have significant environmental effects and the requirements for consulting Natural England on SEA are set out in the [National Planning Practice Guidance](#).

We welcome the production of this SEA Scoping report. The following comments are intended to further improve the SEA and its usefulness in assessing the Neighbourhood Plan.

Appendix A1 – Plans, policies and programmes

Natural England approves of the plans, policies and programmes listed.

Appendix A2 – Baseline information

Biodiversity, flora and fauna

Under the proposed indicator “*Changes to protected habitats and impacts of species within the Herefordshire Local Biodiversity Action Plan*”, no baseline information source has been identified. Maps of priority habitats and species are available on *Magic*, Defra’s GIS package for environmental assets (www.natureonthemap.naturalengland.org.uk).

Baseline information on the landscape and open spaces needs to be included under SA objective 15: “*Value, protect, enhance and restore the landscape quality of Herefordshire, including its rural areas and open spaces*”. Reference could be made to the county Landscape Character Assessment

and Landscape Characterisation studies including Historic Landscape Characterisation if this has been carried out.

Water, air, soil and material assets

This section (or suitable alternative) should include information on geodiversity. The baseline and assessment should make reference to geological conservation and the need to conserve, interpret and manage geological sites and features, both in the wider environment and in relation to designated features. The Herefordshire & Worcestershire Earth Heritage Trust may be of assistance.

Soil

We note that the best and most versatile agricultural land has not been considered. We suggest including an indicator to monitor the hectares of the best and most versatile agricultural land lost to development.

Appendix A3 – Environmental issues identified from the baseline

We note that geodiversity is not covered. This issue should be added to the SEA baseline information, so that significant impacts on this aspect of the environment can be given appropriate consideration.

Appendix A4 – SEA Framework

Under the SEA topic *“Nature Conservation (Biodiversity, flora and fauna)”*, we would welcome the inclusion of an indicator/target around the impact/benefit to ecological networks (NPPF paragraph 109, 113 and 117). We note that no targets have been identified against the indicator *“After use of mineral sites especially wildlife habitat creation”*; we suggest that perhaps the percentage of opportunities taken could be monitored. Against *“Changes to protected habitats and impacts of species within the Herefordshire Local Biodiversity Action Plan”*, we suggest that as a minimum there should be no net losses. The NPPF sets out a requirement to move to net gains for nature (paragraph 9), drawing on the Natural Environment White Paper.

Under the SEA topic *“Landscape”* we suggest that reference could be made to the county Landscape Character Assessment and Landscape Characterisation studies including Historic Landscape Characterisation

Habitats Regulations Assessment Screening

Where a Neighbourhood Plan could potentially lead to significant environmental effects it will be necessary to screen the Plan in relation to the Habitats and Species Regulations (2010), as amended (the ‘Habitats Regulations’). One of the basic conditions that will be tested at Examination is whether the making of the plan is compatible with European obligations and this includes requirements relating to the Habitats Directive.

In relation to the Habitats Regulations, a Neighbourhood Plan cannot progress if the likelihood of significant effects on any European Site, either alone (or in combination with other plans and projects) cannot be ruled out (see Schedule 2, The Neighbourhood Planning (General) Regulations 2012). Therefore measures may need to be incorporated into the Neighbourhood Plan to ensure that any likely significant effects are avoided in order to secure compliance with the Regulations. A screening exercise should be undertaken if there is any doubt about the possible effects of the Plan on European protected sites. This will be particularly important if a Neighbourhood Plan is to progress before a Local Plan has been adopted and/or the Neighbourhood Plan proposes development which has not been assessed and/or included in the Habitats Regulations Assessment for the Local Plan.

We note the recommendation that a full Habitat Regulations Assessment Screening is undertaken due to proximity to the River Wye Special Area of Conservation (SAC).

We would be happy to comment further should the need arise but if in the meantime you have any queries please do not hesitate to contact us.

For any queries relating to the specific advice in this letter only please contact Gillian Driver on 0300 060 4335. For any new consultations, or to provide further information on this consultation please send your correspondences to consultations@naturalengland.org.uk.

We really value your feedback to help us improve the service we offer. We have attached a feedback form to this letter and welcome any comments you might have about our service.

Yours sincerely

Gillian Driver

Miss Gillian Driver
Planning Adviser
South Mercia Team



ENGLISH HERITAGE

WEST MIDLANDS REGION

Neighbourhood Planning Team
Herefordshire Council
Planning Services
PO Box 230
Blueschool House
Blueschool Street
Hereford
HR1 2ZB.

Our ref:
Your ref:

Telephone 0121 625 6887
Fax 0121 625 6820

01 October 2014

Dear Sir or Madam

CONSULTATION ON SEA SCOPING REPORTS FOR NEIGHBOURHOOD PLANS IN: Belmont Rural; Border Group; Bosbury & Catley; Cradley; Hampton Bishop; Hatfield & District Group; Kingsland: Kingstone and Thruxton Group; Pembridge.

Thank you for your e-mails and the invitation to comment on the SEA Scoping Reports for the Neighbourhood Plans listed above. We have no substantive objection to the contents of the documents. However, having considered the above Neighbourhood Plans please note that overall our comments and recommendations to you in relation to these remain substantively the same as those which we communicated to you in our letter of the 15th August 2014 in response to the first tranche of SEA Scoping Reports. We urge you to refer back to and consider these representations before finalizing the reports in relation to the above Neighbourhood Plans also.

Specifically in relation to the fourth tranche of consultations we are pleased to note that some of the SEA's now appear to reflect aspects our earlier advice, perhaps particularly Belmont Rural, Hampton Bishop and Border Group.

However, Hatfield and District and Kingstone and Thruxton Group have proposed indicators for locally important buildings in conservation areas but in fact neither Parish has a conservation area so the indicator should more properly refer to locally important buildings "in the Parish". The Kingsland SEA identifies Kingslands Castle and St Michaels Church as BAR but only proposes to address the improvement of the condition of the Castle, which appears to be anomalous.

Both Kingsland and Pembridge and other of the SEA's appear to have anomalous references to SAM's, the Herefordshire SMR, monitoring changes to historic landscapes and historic landscape character assessments in relation to SA Objective 14 "Use natural resources and energy more effectively". Presumably this is unintentional and they would in fact be more relevant under SA Objectives 15 and 20?

I hope this is helpful.

Yours faithfully

A handwritten signature in black ink, appearing to read 'P. Boland', with a long horizontal flourish extending to the right.

Pete Boland
Historic Places Adviser
E-mail: peter.boland@english-heritage.org.uk

Appendix 4

Template B1: Bosbury NDP Objectives review against SEA objectives

Parish Council Name: Bosbury

Neighbourhood Development Plan Name: Bosbury Neighbourhood Plan

Date completed: October 2014

Objectives verses SEA Objectives (SMART and Compatibility Test)				
SEA Stage B1	Key:	SMART criteria:		The following matrix appraises the emerging Bosbury NDP Objectives in terms of their SMART criteria and their compatibility with the SEA Objectives. These have been developed from Government guidance on SEA and from the local evidence base gathered for identifying the NDP issues.
+ =	Compatible	S – Specific:	NDP objectives should specify what is intended to be done in detail and should not be open to a wide range of misinterpretations	
- =	Possible conflict	M – Measurable:	It should be possible to monitor NDP objectives in a quantifiable way, by the use of indicators. Indicators should be measurable with limited resource implications.	
0 =	Neutral	A – Attainable/achievable:	NDP objectives should be achievable and deliverable, related to the scale of growth proposed	
X =	No relationship between objectives	R – Realistic:	NDP objectives should relate to the overall vision of the plan. Likewise, chosen indicators should relate to objectives and their outcomes.	
? =	Unclear, more information needed	T – Time-Bound:	Objectives should be specific to the NDP period or another specified time-frame. Objectives should be associated with a target and indicators should specify when the target should be achieved.	

SEA Objectives

- 1- To maintain and enhance nature conservation (biodiversity, flora and fauna)
- 2- To maintain and enhance the quality of landscapes and townscapes
- 3- To improve quality of surroundings
- 4- To conserve and where appropriate enhance the historic environment and culture heritage
- 5- To improve air quality
- 6- To reduce the effect of traffic on the environment
- 7- To reduce contributions to climate change
- 8- To reduce vulnerability to climate change
- 9- To improve water quality
- 10- To provide for sustainable sources of water supply
- 11- To avoid, reduce and manage flood risk
- 12- To conserve soil resources and quality
- 13- To minimise the production of waste
- 14- To improve health of the population
- 15- To reduce crime and nuisance
- 16- To conserve natural and manmade resources

NDP objectives	SEA objectives																			
	1	2	3	4	5	6	7	8	9	10	11	12	13	14	15	16	Conclusions	Recommendations	SMART Test of NDP objective	After SMART objectives
1.Deliver a housing growth strategy tailored to the needs and context of Bosbury village.	0	+	+	+	?	?	?	?	?	?	?	?	+	x	x	+	Overall the objective to ensure that the delivering housing in Bosbury are tailored to the needs and context of Bosbury Village, this meets all the relevant SEA criteria.	Ensure proposed development has some sustainable design elements to reduce environmental impact of new development.	This objective meets all of the SMART criteria except specifying a time frame in which the objective will be achieved; a time frame will strengthen the objective.	Deliver a housing growth strategy tailored to the needs and context of Bosbury village, within the plan period.
2.Sustain and improve local facilities for existing and new residents.	0	+	+	0	0	x	x	x	x	x	x	x	x	+	+	0	Overall the objective to sustain and improve local facilities, for existing and new residents is generally compatible and neutral to the relevant SEA criteria.	-	This objective meets all of the SMART criteria except specifying a time frame in which the objective will be achieved; a time frame will strengthen the objective.	Sustain and improve local facilities for existing and new residents, within the plan period.
3.Strengthen and support economic activity.	0	+	+	0	0	0	x	x	x	x	x	x	x	+	x	x	Overall the objective to strengthen and support economic activity meets all the relevant SEA criteria.	-	This objective meets all of the SMART criteria except specifying a time frame in which the objective will be achieved; a time frame will strengthen the objective.	Strengthen and support economic activity, within the plan period.
4. Only consider sensitive development which protects and enriches the landscape and built setting.	+	+	+	+	0	0	x	x	x	x	x	+	x	x	x	+	Overall the objective to only consider sensitive development which protects and enriches the landscape and built setting meets all the relevant SEA criteria.	-	This objective meets all of the SMART criteria except specifying a time frame in which the objective will be achieved; a time frame will strengthen the objective.	Only consider sensitive development which protects and enriches the landscape and built setting, within the plan period.
5.Promote environmental energy performance thereby reducing carbon emissions.	0	0	0	0	+	x	+	+	x	x	x	+	+	+	x	0	Overall the objective to promote environmental energy performance thereby reducing carbon emissions. meets all the relevant SEA criteria.	-	This objective meets all of the SMART criteria except specifying a time frame in which the objective will be achieved; a time frame will strengthen the objective.	Promote environmental energy performance thereby reducing carbon emissions, within the plan period.
6. Prioritise local distinctiveness in every element of change and growth.	+	+	+	+	+	+	+	+	+	+	+	+	+	+	+	+	Overall the objective to prioritise local distinctiveness in every element of change and growth meets all the relevant SEA criteria.	-	This objective meets all of the SMART criteria except specifying a time frame in which the objective will be achieved; a time frame will strengthen the objective.	Prioritise local distinctiveness in every element of change and growth, within the plan period.
7.Protect green-space and the rural landscape.	+	+	+	x	+	+	+	x	x	x	+	+	x	+	+	+	Overall the objective to protect green-space and the rural landscape generally meets all the relevant SEA criteria.	-	This objective meets all of the SMART criteria except specifying a time frame in which the objective will be achieved; a time frame will strengthen the objective.	Protect green-space and the rural landscape, within the plan period.

Template B2: Develop and Refinement of NDP polices –Bosbury NDP

Parish Council Name: Bosbury parish.

Neighbourhood Development Plan Name: Bosbury Neighbourhood development Plan

Date completed: October 2014

Objectives verses SEA Objectives (SMART and Compatibility Test)				
SEA Stage B1	Key:	SMART criteria:		The following matrix appraises the emerging Bosbury NDP Objectives in terms of their SMART criteria and their compatibility with the SEA Objectives. These have been developed from Government guidance on SEA and from the local evidence base gathered for identifying the NDP issues.
+ =	Compatible	S – Specific:	NDP objectives should specify what is intended to be done in detail and should not be open to a wide range of misinterpretations	
- =	Possible conflict	M – Measurable:	It should be possible to monitor NDP objectives in a quantifiable way, by the use of indicators. Indicators should be measurable with limited resource implications.	
0 =	Neutral	A – Attainable/achievable:	NDP objectives should be achievable and deliverable, related to the scale of growth proposed	
X =	No relationship between objectives	R – Realistic:	NDP objectives should relate to the overall vision of the plan. Likewise, chosen indicators should relate to objectives and their outcomes.	
? =	Unclear, more information needed	T – Time-Bound:	Objectives should be specific to the NDP period or another specified time-frame. Objectives should be associated with a target and indicators should specify when the target should be achieved.	

SEA Objectives	Baseline carried over from Stage A
<p>1- To maintain and enhance nature conservation (biodiversity, flora and fauna)</p> <p>2- To maintain and enhance the quality of landscapes and townscapes</p> <p>3- To improve quality of surroundings</p> <p>4- To conserve and where appropriate enhance the historic environment and culture heritage</p> <p>5- To improve air quality</p> <p>6- To reduce the effect of traffic on the environment</p> <p>7- To reduce contributions to climate change</p> <p>8- To reduce vulnerability to climate change</p> <p>9- To improve water quality</p> <p>10- To provide for sustainable sources of water supply</p> <p>11- To avoid, reduce and manage flood risk</p> <p>12- To conserve soil resources and quality</p> <p>13- To minimise the production of waste</p> <p>14- To improve health of the population</p> <p>15- To reduce crime and nuisance</p> <p>16- To conserve natural and manmade resources</p>	<p>1-The 2011-2013 AMR does not contain updated conservation data.2010/11: 27% of Herefordshire’s SSSI land was in favourable condition. There are 3 SSSIs. Birchend (Favourable (part) Unfavourable Recovering (part))(border); Bank & Cother Wood (Favourable (part)Unfavourable recovering (part) (border); Malvern Hills (Favourable (part) Unfavourable Recovering (part)) (border). The parish falls outside the hydrological catchment area for the River Wye SAC. The parish falls within the Upper River Leadon Sub catchment. The 2011-2013 AMR does not contain updated conservation data. 2010/11: 17 Habitat Action Plans and 14 Species Action Plans are currently in operation across Herefordshire. Bosbury has: SSSI: 3,SWS: 24, RIGs:4, 1 Geopark: Malvern Hills. There are no SACs, NNRs, SINCs and LNRs within the parish.</p> <p>2-There are no outstanding enforcement actions or appeals concerning the aspects of local loss of heritage assets, and locally important buildings within a conservation area at present. The Parish Area has the following landscape types: Settled farmlands, Principled settled farmlands and Ancient bordered farmlands.</p> <p>3-There are no formal play areas within Bosbury. However Bosbury has 1.5ha of playing pitch with 100% secured community access (Cricket only).This currently rated in a good condition. Bosbury primary school has a junior football pitch but is currently not in use.</p> <p>4-Whilst there is no qualitative, locally specific data available at present, there are two scheduled monuments in Bosbury according to the latest version of the register. There are no outstanding enforcement actions or appeals concerning the aspects of local loss of heritage assets, and locally important buildings within a conservation area at present.</p> <p>5-Between 2005 and 2010 Herefordshire’s total and per capita carbon emission reduced by 7% and 8% respectively; while UK’s total and per capita carbon emission reduced by 8% and 12% respectively within the same period. This suggests that air quality is improving.</p> <p>6-% of Herefordshire residents who travel to work by: Car: 70.1%, Foot: 14.7;,Bicycle: 4.3%,Bus: 2%, Train: 0.8%,Motorbike: 0.8%,Taxi: 0.3%,Other: 7%.</p> <p>7-Herefordshire latest figure of C02 emissions per capita-dates back to 2010: 1.61 million tonnes (mtCO²)</p> <p>8-Reduce the risk of flooding-There have been no approvals contrary to EA advice since reporting began in 2004.The 2011-2013 AMR does not contain updated conservation data.</p> <p>9-Percentage of river length assessed as good or very good chemical quality and ecological quality as required by the Water Framework Directive. Latest figure dates back to 2005: 84%.</p> <p>10-Bosbury falls within the Upper Leadon catchment. Upper Leadon has a 35-40% standard run percentage run off by sub catchment. This is potentially highly unsuitable for infiltration source control. Upper Leadon catchment has a moderately rapid peak response time of 5-7 hours. The WCS identifies that the River Leadon is designated as Sensitive Waters (susceptible to eutrophication) under the Urban Wastewater Treatment Directive. The Leadon is classified as ecologically poor.</p> <p>11-Number of planning permissions granted contrary to the advice of the Environment Agency on flood defence grounds. The 2011-2013 AMR does not contain updated conservation data.</p> <p>12-Around the village of Bosbury the soil classification is grade 3 in the north (good to moderate) and grade 1 (excellent in the south, leaving the rest of Bosbury with grade 2 land (very good).</p> <p>13/14/15-N/A</p> <p>16-There are numerous listed buildings within the parish and two SAMs. None are currently recorded in the Buildings at Risk Register. There are no outstanding enforcement actions or appeals concerning locally important buildings within Bosbury at present.</p>

NDP	SEA objectives																		
Options	1	2	3	4	5	6	7	8	9	10	11	12	13	14	15	16	Summary in relation to baseline	Overall commentary and any initial cumulative effects/ Recommendations	Conformity with Core Strategy
Baseline	1	2	3	4	5	6	7	8	9	10	11	12	N/A	N/A	N/A	13			
Op1-P1-Option 1- Development should be all in one site until area is exhausted	-	-	-	-	?	-	?	?	-	?	?	-	?	?	?	-	Overall this policy option has mainly an uncertain and negative impact on the baseline data. This is due to potential overdevelopment and use of natural and manmade resources, as well as not having restrictions of size and scale of development.	Overall this policy option is uncertain and does not yet meet the SEA baseline. It is unknown what impact additional traffic will have on the environment. Development on one site may cause traffic congestion in particular areas. There may be a detrimental impact on natural and manmade resources. It is uncertain if development will aim to reduce contributions to climate change.	This policy does not yet meet the Core Strategy requirements for the purposes of the SEA..
Op2-P1-Option 2- Development should be spread in small pockets across numerous sites	-	-	?	?	-	-	?	?	?	?	?	-	?	?	?	-	Overall this policy option has mainly a negative as well as uncertain impact on the baseline data. This is due to spreading development in various areas; this could have a detrimental impact on biodiversity as well as impact on quality of soil and landscapes.	Overall this policy option does not yet meet the SEA baseline. This option may have a detrimental effect on the biodiversity and wildlife due to having many sites, but this is dependent on where sites and how sites re located and developed. Dispersing development in small pockets may increase traffic in particular areas.	This policy does not yet meet the Core Strategy requirements for the purposes of the SEA.
Op3 -P1-Option 3- Respect the current village character	+	+	+	+	x	0	x	x	x	x	x	x	0	0	0	+	Overall this policy option has mainly a positive and neutral impact on the baseline data.	This policy option meets the Core Strategy requirements for the purposes of the SEA.	This policy meets the Core Strategy requirements for the purposes of the SEA.
Op 4-P1-Option 4- Continue linear layout of village with open fields behind	?	?	?	0	?	?	?	?	?	?	?	?	?	?	?	?	Overall this policy option has mainly an uncertain impact on the environmental baseline. This is because it does not specific scale, location and nature of the proposed development.	Depends on size and position of development, therefore many of the SEA objectives are uncertain in relation to the policy option.	This policy does not meet the Core Strategy requirements for the purposes of the SEA.
Op 5- P1-Option 5- Add additional housing to meet local needs	?	?	?	?	?	?	?	?	?	?	?	?	?	?	?	?	Overall this policy option has mainly an uncertain impact on the environmental baseline. It depends on how additional housing is developed in order to assess if it has a significant environmental impact.	Overall this policy option is uncertain and does not yet meet the SEA baseline. It is unknown what impact, as it depends on size and location of development, however if it is to meet local needs it may have a positive impact towards quality of surroundings.	This policy does not yet meet the Core Strategy requirements for the purposes of the SEA.
Op 6-P1-Option 6- Be limited to 6 homes over 5 years	?	?	?	?	?	?	?	?	?	?	?	?	?	?	?	?	Overall this policy option has mainly an uncertain impact on the environmental baseline. It depends on how additional housing is developed in order to assess if it has a significant environmental impact.	Overall this policy option is uncertain and does not yet meet the SEA baseline. It is unknown what impact, as it depends on location of development. However as it is of small scale it is likely to have a minimal effect on the surrounding environment.	This policy does not yet meet the Core Strategy requirements for the purposes of the SEA.

Op 7-P1-Option 7- Limited to 7-12 new homes over 5 years	?	?	?	?	?	-	?	?	?	?	?	?	?	?	?	?	Overall this policy option has mainly an uncertain impact on the environmental baseline. It depends on how additional housing is developed in order to assess if it has a significant environmental impact.	Overall this policy option is uncertain and does not meet the SEA baseline. It is unknown what impact, as it depends on size and location of development.	This policy does not meet the Core Strategy requirements for the purposes of the SEA.
Op 8-P1-Option 8- Limited to 13-16 homes over the next five years	-	?	?	?	?	-	?	?	?	?	?	-	?	?	?	-	Overall this policy option has mainly an uncertain impact on the environmental baseline. It depends on how additional housing is developed in order to assess if it has a significant environmental impact.	Overall this policy option is uncertain and does not meet the SEA baseline. It is unknown what impact, as it depends on size and location of development. However as it is quite a large scale it is likely there will be some impact on biodiversity, soil and water quality.	This policy does not yet meet the Core Strategy requirements for the purposes of the SEA.
Op 9-P1-Option 9- Not be limited but tightly control size of individual development	0	?	?	?	?	?	?	?	?	?	?	?	?	?	?	?	Overall this policy option has mainly an uncertain impact on the environmental baseline. This is because it does not specific scale, location and nature of the proposed development.	Overall this policy option is uncertain and is uncertain if it meets the SEA baseline. It is unknown what impact, as it depends on size and location of development, however a tight control of individual development may have a positive impact towards quality of surroundings.	This policy does not yet meet the Core Strategy requirements for the purposes of the SEA.
Op 10-P1-Option 10- Use brownfield sites as a priority	+	+	+	?	?	?	?	?	?	?	?	+	+	?	?	+	Overall this policy option has mainly an uncertain impact on the environmental baseline. This is because it does not specific scale, location and nature of the proposed development. Re use of brownfield sites will help minimise waste.	Overall this policy option is uncertain and does not yet meet the SEA baseline. It is unknown what impact, as it depends on size and location of development, however if it is to meet local needs it may have a positive impact towards quality of surroundings.	This policy does not yet meet the Core Strategy requirements for the purposes of the SEA.
Op 11-P2-Option 1- Respect, and where possible. Enhance the natural, built and historic environment	+	+	+	+	X	X	X	X	X	X	X	+	+	+	+	+	Overall this policy option has mainly a positive impact as it strives to have a positive impact on the surrounding environment. This includes enhancing the historic and natural built environment.	Overall this policy option has a positive impact on the SEA baseline and complies with the SEA baseline.	This policy meets the Core Strategy requirements for the purposes of the SEA.
Op 12-P2-Option 2- Maintain Bosbury village's strong and unique sense of history	X	+	+	+	X	X	X	X	X	X	X	+	X	X	X	+	Overall this policy option has mainly a positive impact as it strives to have a positive impact on the surrounding environment. However it is a very general policy option and does not specify how it strives to achieve this.	Overall this policy option has a positive impact on the SEA baseline and complies with the SEA baseline.	This policy meets the Core Strategy requirements for the purposes of the SEA.
Op 13-P2-Option 3- Not spoil the views into and out of the village and parish	?	?	?	?	?	?	?	?	?	?	?	?	?	?	?	?	Overall this policy option has an uncertain impact as 'spoiling view' is subjective and cannot be measured.	Need further information, this policy option does not yet meet with the SEA baseline or comply with the core strategy. As views cannot be taken into consideration within policy.	This policy does not yet meet the Core Strategy requirements for the purposes of the SEA.

Op 14-P2-Option 4- Be at a measured pace to enable infrastructure expansion	X	+	+	+	+	+	X	X	X	X	X	X	X	X	X	X	Overall this policy option has mainly a positive impact as it strives to have a positive impact on the surrounding environment.	Overall this policy option has a positive impact on the SEA baseline and complies with the SEA baseline.	This policy meets the Core Strategy requirements for the purposes of the SEA.
Op 15-P2-Option 5- Be in areas that are not prone to any types of flooding within Bosbury	X	+	+	+	X	X	+	+	X	+	+	+	X	+	X	+	Overall this policy option has mainly a positive impact as it strives to have a positive impact on the surrounding environment. This includes development not to be developed within flood prone areas.	Overall this policy option has a positive impact on the SEA baseline and complies with the SEA baseline.	This policy meets the Core Strategy requirements for the purposes of the SEA.
Op 16-P2-Option 6- Be designed and constructed in a manner that will not worsen the flood risks of any other area within Bosbury	X	+	+	+	X	X	+	+	X	+	+	+	X	+	X	+	Overall this policy option has mainly a positive impact as it strives to have a positive impact on the surrounding environment; This includes designing for flood risk.	Overall this policy option has a positive impact on the SEA baseline and complies with the SEA baseline.	This policy meets the Core Strategy requirements for the purposes of the SEA.
Op 17-P2-Option 7- Minimise impact on woodland, hedges, the river, brooks, verges and geological features.	+	+	+	+	+	X	+	+	+	X	X	+	X	+	X	+	Overall this policy option has mainly a positive impact as it strives to have a positive impact on the surrounding environment; This includes minimising impact on the surrounding wildlife.	Overall this policy option has a positive impact on the SEA baseline and complies with the SEA baseline.	This policy meets the Core Strategy requirements for the purposes of the SEA.
Op 18-P2-Option 8- Ensure boundaries respect, reflect local tradition/ materials	+	+	+	+	X	X	X	X	X	X	X	X	X	X	X	+	Overall this policy option has mainly a positive impact as it strives to have a positive impact on the surrounding environment. This includes ensuring boundaries to respect and reflect local traditions and materials.	Overall this policy option has a positive impact on the SEA baseline and complies with the SEA baseline.	This policy meets the Core Strategy requirements for the purposes of the SEA.
Op 19-P2-Option 9- Include native Herefordshire species in landscaping	+	+	+	+	X	X	+	X	X	X	X	+	+	X	X	+	Overall this policy option has mainly a positive impact as it strives to have a positive impact on the surrounding environment, including native Herefordshire species in landscaping.	Overall this policy option has a positive impact on the SEA baseline and complies with the SEA baseline.	This policy meets the Core Strategy requirements for the purposes of the SEA.

Op 20-P2-Option 10- Minimise unnecessary tree felling	+	+	+	X	X	X	+	X	X	X	X	X	X	X	X	+	Overall this policy option has mainly a positive impact as it strives to have a positive impact on the surrounding environment. This includes minimising unnecessary tree felling.	Overall this policy option has a positive impact on the SEA baseline and complies with the SEA baseline.	This policy meets the Core Strategy requirements for the purposes of the SEA.
Op 21-P3-Option 1- Support or provide business out in the countryside	X	X	+	X	X	?	?	?	?	?	?	?	?	+	+	X	Overall this policy option has mainly a uncertain impact as it depends on the scale and nature of a business to determine its impact to the surrounding.	Need further information, this policy option does not yet meet with the SEA baseline or comply with the core strategy. As views cannot be taken into consideration within policy.	This policy does not yet meet the Core Strategy requirements for the purposes of the SEA.
Op 22-P3-Option 2- Encourage employment/ apprenticeships for local people	X	X	+	X	X	X	X	X	X	X	X	X	X	+	+	X	Overall this policy option has mainly a positive impact as it strives to have a positive impact on the surrounding environment. This includes encouraging employment And apprenticeships for local people.	Overall this policy option has a positive impact on the SEA baseline and complies with the SEA baseline.	This policy meets the Core Strategy requirements for the purposes of the SEA.
Op 24- P4-Option 1- Support or enhance existing services and facilities (including school, sports field, pub and community buildings)	X	+	+	X	X	X	X	X	X	X	X	+	+	+	+	X	Overall this policy option has mainly a positive impact as it strives to have a positive impact on the surrounding environment. This includes supporting and enhancing existing services and community facilities within Bosbury.	Overall this policy option has a positive impact on the SEA baseline and complies with the SEA baseline.	This policy meets the Core Strategy requirements for the purposes of the SEA.
Op 25-P4-Option 2- Development should show how it will contribute to increasing sustainability in the parish	X	X	+	X	+	+	+	+	+	+	+	+	+	X	X	X	Overall this policy option has mainly a positive impact as it strives to have a positive impact on the surrounding environment, By showing how sustainable development is to be achieved within Bosbury.	Overall this policy option has a positive impact on the SEA baseline and complies with the SEA baseline.	This policy meets the Core Strategy requirements for the purposes of the SEA.
Op 26-P5-Option 1- Improve footpaths/ bridleways/ pedestrian and cycle facilities	X	+	+	X	+	+	X	X	X	X	X	X	+	+	X	X	Overall this policy option has mainly a positive impact as it strives to have a positive impact on the surrounding environment. This includes improving footpaths, bridleways, pedestrian and cycle facilities.	Overall this policy option has a positive impact on the SEA baseline and complies with the SEA baseline. This may help improve health and air quality within the parish.	This policy meets the Core Strategy requirements for the purposes of the SEA.
Op 27-P6-Option 1- Minimise visual and landscape	+	+	+	X	X	X	X	X	X	X	X	X	X	X	X	+	Overall this policy option has mainly a positive impact as it strives to have a positive impact on the surrounding environment. This includes minimising	Overall this policy option has a positive impact on the SEA baseline and complies with the SEA baseline.	This policy meets the Core Strategy requirements for the

impact																	visual impact on the surrounding environment.		purposes of the SEA.
Op 28-P6-Option 2-Not harm or impact habitats and wildlife corridors	+	+	+	X	X	X	X	X	X	X	X	X	X	X	X	+	Overall this policy option has mainly a positive impact as it strives to have a positive impact on the surrounding environment. This includes no harm or impact towards surrounding wildlife habitats.	Overall this policy option has a positive impact on the SEA baseline and complies with the SEA baseline.	This policy meets the Core Strategy requirements for the purposes of the SEA.
Opt 29-P6-Option 3-Conform with landscape and nature conservation policies	+	+	+	+	X	X	X	X	X	X	X	X	X	X	X	+	Overall this policy option has mainly a positive impact as it strives to have a positive impact on the surrounding environment. This includes conforming to landscape and nature conservation policies.	Overall this policy option has a positive impact on the SEA baseline and complies with the SEA baseline.	This policy meets the Core Strategy requirements for the purposes of the SEA.

B2-Preferred / Chosen NDP Policies

NDP Policies	SEA objectives																Summary in relation to baseline	Overall commentary and any initial cumulative effects/ Recommendations	Conformity with Core Strategy
	1	2	3	4	5	6	7	8	9	10	11	12	13	14	15	16			
Baseline	1	2	3	4	5	6	7	8	9	10	11	12	N/A	N/A	N/A	13			
Policy 1- Housing Growth	0	+	+	+	0	?	X	X	X	X	X	+	+	+	0	0	Overall the housing growth policy has mainly a positive impact on the baseline data.	Overall this policy meets the SEA baseline. It is unknown what impact additional traffic will have on the environment. However due to the small scale of the development the traffic impact is likely to be minimal. Therefore no action is required.	This policy meets the Core Strategy requirements for the purposes of the SEA.
Policy 2- Local Character	+	+	+	+	X	X	+	+	X	X	+	+	+	0	0	+	Overall the policy local character has mainly a positive impact on the baseline data.	Overall this policy meets the SEA baseline. Therefore no action is required.	This policy meets the Core Strategy requirements for the purposes of the SEA.
Policy 3- The Local Economy	+	+	+	+	0	0	0	0	X	X	X	+	+	+	+	+	Overall this policy has mainly a positive impact on the baseline data.	Overall this policy meets the SEA baseline. Potential effects. Therefore no action is required.	In regard to economy this policy meets the Core Strategy requirements for the purposes of the SEA.
Policy 4- Local Facilities	X	+	+	+	0	0	0	0	X	X	X	X	+	+	+	+	Overall this policy has mainly a positive impact on the baseline data.	Overall this policy meets the SEA baseline. Potential effects. Therefore no action is required.	In regards to local facilities this policy meets the Core Strategy requirements for the purposes of the SEA.

Policy 5-Transport	+	+	+	x	+	+	+	+	0	x	x	0	+	+	x	+	Overall this policy has mainly a positive impact on the baseline data.	Overall this policy meets the SEA baseline. Potential effects. Therefore no action is required.	In regards to transport this policy meets the Core Strategy requirements for the purposes of the SEA.
Policy 6-Landscape and Environment.	+	+	+	+	0	x	x	x	x	x	+	+	x	+	x	+	Overall this policy has mainly a positive impact on the baseline data.	Overall this policy meets the SEA baseline. Potential effects. Therefore no action is required.	In regard to landscape and the environment this policy meets the Core Strategy requirements for the purposes of the SEA.

B2-Site Options / Chosen site

NDP New development Settlement Boundary Options	SEA objectives																		
	1	2	3	4	5	6	7	8	9	10	11	12	13	14	15	16	Summary in relation to baseline	Overall commentary and any initial cumulative effects/ Recommendations	Conformity with Core Strategy
Baseline	1	2	3	4	5	6	7	8	9	10	11	12	N/A	N/A	N/A	13			
Site Option 1-Extend development at Old Court Farm	+	+	+	0	0	0	x	x	x	x	-	x	x	x	x	x	Impact of flood risk needs to be mitigated Potential development may create additional permanent traffic and construction traffic in the town affecting air quality , however as it is on a small scale over a lengthy time period it is unlikely to cause significant environmental damage.	Overall this does not policy meets the SEA baseline. Potential effects. Therefore no action is required.	This policy meets the Core Strategy requirements for the purposes of the SEA.
Site Option 2-Extend Development North of Forge Bank	+	+	+	x	?	?	x	x	x	x	x	x	x	x	x	x	Potential development may create additional permanent traffic and construction traffic in the town affecting air quality , however as it is on a small scale over a lengthy time period it is unlikely to cause significant environmental damage.	Overall this policy meets the SEA baseline. Potential effects. Therefore no action is required.	This policy meets the Core Strategy requirements for the purposes of the SEA.
Site Option 3-(chosen option) Extend development at Old Court Farm and the	+	+	+	?	?	?	0	0	0	0	-	0	+	+	+	0	Impact of flood risk needs to be mitigated Potential development may create additional permanent traffic and construction traffic in the town affecting air quality , however as it is	Overall this policy meets the SEA baseline. Potential effects. Therefore no action is required.	This policy meets the Core Strategy requirements for the purposes of the SEA.

Vicarage																	on a small scale over a lengthy time period it is unlikely to cause significant environmental damage.		
Site Option Extend Development north of Forge Bank and the Vicarage 4-	+	+	+	x	?	?	x	x	x	x	x	x	x	x	x	x	Potential development may create additional permanent traffic and construction traffic in the town affecting air quality , however as it is on a small scale over a lengthy time period it is unlikely to cause significant environmental damage.	Overall this policy meets the SEA baseline. Potential effects. Therefore no action is required.	This policy meets the Core Strategy requirements for the purposes of the SEA.

Template B3: Predict and evaluate the effects of the policies and sites within the Neighbourhood Development Plan

Parish Council Name: Bosbury

Neighbourhood Development Plan Name: Bosbury Neighbourhood Plan

Date completed: November

Key:

++ Move towards significantly	+ Move towards Marginally	- - Move away significantly	- Move away marginally	0 Neutral	? Uncertain	N/A No relationship
-------------------------------	---------------------------	-----------------------------	------------------------	-----------	-------------	---------------------

Policy 1-Housing Growth

SEA Objective	Assessment of effect (consider cumulative effects, significance of the effect and magnitude of the effect in terms of the three time periods)			Summary Explanation	Enhancement and mitigation opportunities
	Short term (1 – 5 years)	Medium term (6 – 10 years)	Long term (11 years +)		
To maintain and enhance nature conservation (biodiversity, flora and fauna)	-	0	0	Overall this Policy is not over and above the Core Strategy. Due to the scale and nature of the development, it is unlikely to have a significant impact on the environment.	
To maintain and enhance the quality of landscapes and townscapes	+	+	+	Overall this Policy is not over and above the Core Strategy. This policy strives to be in keeping with	N/A

				the current village character.	
To improve quality of surroundings	++	+	+	Overall this Policy is not over and above the Core Strategy. This policy strives to be in keeping with the current village character.	N/A
To conserve and where appropriate enhance the historic environment and cultural heritage	+	+	+	Overall this Policy is not over and above the Core Strategy. This policy aims to be respectful and in keeping with the current village character.	N/A
To improve air quality	0	0	0	Overall this Policy is not over and above the Core Strategy. Due to the scale and nature of the development, it is unlikely to have a significant impact on the environment.	N/A
To reduce the effect of traffic on the environment	?	+	+	Overall this Policy is not over and above the Core Strategy. Construction traffic may have an impact on the surroundings in the initial stages of development.	N/A
To reduce contributions to climate change	X	X	X	-	-
To reduce vulnerability to climate change	X	X	X	--	-
To improve water quality	X	X	X	-	-

To provide for sustainable sources of water supply	X	X	X	-	-
To avoid, reduce and manage flood risk	X	X	X	-	-
To conserve soil resources and quality	0	0	+	Overall this Policy is not over and above the Core Strategy. Due to the scale and nature of the development, it is unlikely to have a significant impact on the environment.	N/A
To minimise the production of waste	0	+	+	Overall this Policy is not over and above the Core Strategy. Due to the scale and nature of the development, it is unlikely to have a significant impact on the environment.	N/A
To improve health of the population	+	+	+	Overall this Policy is not over and above the Core Strategy. Due to the scale and nature of the development, it is likely it may improve the health of the population.	N/A
To reduce crime and nuisance	0	0	0	Overall this Policy is not over and above the Core Strategy. Due to the scale and nature of the development, it is unlikely to have a significant impact on the environment.	N/A

To conserve natural and manmade resources	0	0	0	Overall this Policy is not over and above the Core Strategy.	N/A
Overall commentary and any cumulative effects	+	+	+	Overall these Policies are not over and above the Core Strategy.	N/A

Policy 2-Local Character

SEA Objective	Assessment of effect (consider cumulative effects, significance of the effect and magnitude of the effect in terms of the three time periods)			Summary Explanation	Enhancement and mitigation opportunities
	Short term (1 – 5 years)	Medium term (6 – 10 years)	Long term (11 years +)		
To maintain and enhance nature conservation (biodiversity, flora and fauna)	+	+	+	Overall this Policy is not over and above the Core Strategy.	N/A
To maintain and enhance the quality of landscapes and townscapes	++	++	++	Overall this Policy is not over and above the Core Strategy.	N/A
To improve quality of surroundings	++	+	+	Overall this Policy is not over and above the Core Strategy.	N/A

To conserve and where appropriate enhance the historic environment and cultural heritage	++	++	++	Overall this Policy is not over and above the Core Strategy.	N/A
To improve air quality	X	X	X	-	-
To reduce the effect of traffic on the environment	X	X	X	-	-
To reduce contributions to climate change	+	+	+	Overall this Policy is not over and above the Core Strategy.	N/A
To reduce vulnerability to climate change	+	+	+	Overall this Policy is not over and above the Core Strategy.	N/A
To improve water quality	X	X	X	-	-
To provide for sustainable sources of water supply	X	X	X	-	-
To avoid, reduce and manage flood risk	++	++	++	Overall this Policy is not over and above the Core Strategy.	N/A
To conserve soil resources and quality	+	0	0	Overall this Policy is not over and above the Core Strategy.	N/A
To minimise the production of waste	+	0	0	Overall this Policy is not over and above the Core Strategy.	N/A
To improve health of the population	0	0	0	Overall this Policy is not over and above the Core Strategy.	N/A

To reduce crime and nuisance	0	0	0	Overall this Policy is not over and above the Core Strategy.	N/A
To conserve natural and manmade resources	+	+	+	Overall this Policy is not over and above the Core Strategy.	N/A
Overall commentary and any cumulative effects	+	+	+	Overall this Policy is not over and above the Core Strategy.	N/A

Policy 3-The Local Economy

SEA Objective	Assessment of effect (consider cumulative effects, significance of the effect and magnitude of the effect in terms of the three time periods)			Summary Explanation	Enhancement and mitigation opportunities
	Short term (1 – 5 years)	Medium term (6 – 10 years)	Long term (11 years +)		
To maintain and enhance nature conservation (biodiversity, flora and fauna)	0	+	+	Overall this Policy is not over and above the Core Strategy.	N/A
To maintain and enhance the quality of landscapes and townscapes	0	+	+	Overall this Policy is not over and above the Core Strategy.	N/A

To improve quality of surroundings	+	+	+	Overall this Policy is not over and above the Core Strategy.	N/A
To conserve and where appropriate enhance the historic environment and cultural heritage	+	+	+	Overall this Policy is not over and above the Core Strategy.	N/A
To improve air quality	0	0	0	Overall this Policy is not over and above the Core Strategy.	N/A
To reduce the effect of traffic on the environment	0	0	0	Overall this Policy is not over and above the Core Strategy.	N/A
To reduce contributions to climate change	0	0	0	Overall this Policy is not over and above the Core Strategy.	N/A
To reduce vulnerability to climate change	0	0	0	Overall this Policy is not over and above the Core Strategy.	N/A
To improve water quality	X	X	X	-	-
To provide for sustainable sources of water supply	X	X	X	-	-
To avoid, reduce and manage flood risk	X	X	X	-	-
To conserve soil resources and quality	+	+	+	Overall this Policy is not over and above the Core Strategy.	N/A
To minimise the production of waste	+	+	0	Overall this Policy is not over and above the Core Strategy.	N/A

To improve health of the population	+	+	+	Overall this Policy is not over and above the Core Strategy.	N/A
To reduce crime and nuisance	+	+	+	Overall this Policy is not over and above the Core Strategy.	N/A
To conserve natural and manmade resources	+	+	+	Overall this Policy is not over and above the Core Strategy.	N/A
Overall commentary and any cumulative effects	+	+	+	Overall this Policy is not over and above the Core Strategy.	N/A

Policy 4-Local Facilities

SEA Objective	Assessment of effect (consider cumulative effects, significance of the effect and magnitude of the effect in terms of the three time periods)			Summary Explanation	Enhancement and mitigation opportunities
	Short term (1 – 5 years)	Medium term (6 – 10 years)	Long term (11 years +)		
To maintain and enhance nature conservation (biodiversity, flora and fauna)	X	X	X	(this could be 'This Policy is not over and above the Core Strategy')	-
To maintain and enhance the quality of landscapes	+	+	+	Overall this Policy is not over and above the Core Strategy.	N/A

and townscapes					
To improve quality of surroundings	+	+	+	Overall this Policy is not over and above the Core Strategy.	N/A
To conserve and where appropriate enhance the historic environment and cultural heritage	+	+	+	Overall this Policy is not over and above the Core Strategy.	N/A
To improve air quality	0	0	0	Overall this Policy is not over and above the Core Strategy.	N/A
To reduce the effect of traffic on the environment	0	0	0	Overall this Policy is not over and above the Core Strategy.	N/A
To reduce contributions to climate change	0	0	0	Overall this Policy is not over and above the Core Strategy.	N/A
To reduce vulnerability to climate change	0	0	0	Overall this Policy is not over and above the Core Strategy.	N/A
To improve water quality	X	X	X	-	-
To provide for sustainable sources of water supply	X	X	X	-	-
To avoid, reduce and manage flood risk	X	X	X	-	-
To conserve soil resources and quality	0	+	+	Overall this Policy is not over and above the Core Strategy.	N/A

To minimise the production of waste	0	+	+	Overall this Policy is not over and above the Core Strategy.	N/A
To improve health of the population	0	+	+	Overall this Policy is not over and above the Core Strategy.	N/A
To reduce crime and nuisance	+	+	+	Overall this Policy is not over and above the Core Strategy.	N/A
To conserve natural and manmade resources	0	0	+	Overall this Policy is not over and above the Core Strategy.	N/A
Overall commentary and any cumulative effects	+	+	+	Overall this Policy is not over and above the Core Strategy.	N/A

Policy 5-Transport.

SEA Objective	Assessment of effect (consider cumulative effects, significance of the effect and magnitude of the effect in terms of the three time periods)			Summary Explanation	Enhancement and mitigation opportunities
	Short term (1 – 5 years)	Medium term (6 – 10 years)	Long term (11 years +)		
To maintain and enhance nature conservation (biodiversity, flora and fauna)	+	+	+	Overall this Policy is not over and above the Core Strategy.	N/A

To maintain and enhance the quality of landscapes and townscapes	+	+	+	Overall this Policy is not over and above the Core Strategy.	N/A
To improve quality of surroundings	+	+	+	Overall this Policy is not over and above the Core Strategy.	N/A
To conserve and where appropriate enhance the historic environment and cultural heritage	X	X	X	-	-
To improve air quality	+	+	+	Overall this Policy is not over and above the Core Strategy.	N/A
To reduce the effect of traffic on the environment	++	++	++	Overall this Policy is not over and above the Core Strategy.	N/A
To reduce contributions to climate change	+	+	+	Overall this Policy is not over and above the Core Strategy.	N/A
To reduce vulnerability to climate change	+	+	+	Overall this Policy is not over and above the Core Strategy.	N/A
To improve water quality	0	0	0	Overall this Policy is not over and above the Core Strategy.	N/A
To provide for sustainable sources of water supply	X	X	X	-	-
To avoid, reduce and manage flood risk	X	X	X	-	-
To conserve soil resources and quality	0	0	0	Overall this Policy is not over and above the Core Strategy.	N/A

This document is copyright of Herefordshire Council, please contact the Neighbourhood Planning team if you wish to reuse it in whole or part.

To minimise the production of waste	0	+	+	Overall this Policy is not over and above the Core Strategy.	N/A
To improve health of the population	+	+	+	Overall this Policy is not over and above the Core Strategy.	N/A
To reduce crime and nuisance	0	X	X	-	N/A
To conserve natural and manmade resources	+	+	+	Overall this Policy is not over and above the Core Strategy.	N/A
Overall commentary and any cumulative effects	+	+	+	Overall this Policy is not over and above the Core Strategy.	N/A

Policy 6- Landscape and Environment.

SEA Objective	Assessment of effect (consider cumulative effects, significance of the effect and magnitude of the effect in terms of the three time periods)			Summary Explanation	Enhancement and mitigation opportunities
	Short term (1 – 5 years)	Medium term (6 – 10 years)	Long term (11 years +)		
To maintain and enhance nature conservation (biodiversity, flora and fauna)	++	++	++	Overall this Policy is not over and above the Core Strategy.	N/A

To maintain and enhance the quality of landscapes and townscapes	+	+	+	Overall this Policy is not over and above the Core Strategy.	N/A
To improve quality of surroundings	+	+	+	Overall this Policy is not over and above the Core Strategy.	N/A
To conserve and where appropriate enhance the historic environment and cultural heritage	+	+	+	Overall this Policy is not over and above the Core Strategy.	N/A
To improve air quality	0	0	0	Overall this Policy is not over and above the Core Strategy.	N/A
To reduce the effect of traffic on the environment	X	X	X	-	-
To reduce contributions to climate change	X	X	X	-	-
To reduce vulnerability to climate change	X	X	X	-	-
To improve water quality	X	X	X	-	-
To provide for sustainable sources of water supply	X	X	X	-	-
To avoid, reduce and manage flood risk	+	+	+	Overall this Policy is not over and above the Core Strategy.	N/A

To conserve soil resources and quality	+	+	+	Overall this Policy is not over and above the Core Strategy.	N/A
To minimise the production of waste	X	X	X	-	-
To improve health of the population	0	+	+	Overall this Policy is not over and above the Core Strategy.	N/A
To reduce crime and nuisance	X	X	X	-	-
To conserve natural and manmade resources	+	+	+	Overall this Policy is not over and above the Core Strategy.	N/A
Overall commentary and any cumulative effects	+	+	+	Overall this Policy is not over and above the Core Strategy.	N/A

Template B4: Assessment of cumulative impacts of the Neighbourhood Development Plan

Parish Council Name: Bosbury

Neighbourhood Development Plan Name: Bosbury Neighbourhood Plan

Date completed: November 2014

Key:

++ Move towards significantly	+ Move towards marginally	-- Move away Significantly	- Move away marginally	0 Neutral	? Uncertain	X No relationship
--------------------------------------	----------------------------------	-----------------------------------	-------------------------------	------------------	--------------------	--------------------------

SEA Objective Objective / Policy	1. To maintain and enhance nature conservation (biodiversity, flora and fauna)	2. To maintain and enhance the quality of landscapes and townscapes	3. To improve quality of surroundings	4. To conserve and where appropriate enhance the historic environment and culture heritage	5. To improve air quality	6. To reduce the effect of traffic on the environment	7. To reduce contributions to climate change	8. To reduce vulnerability to climate change	9. To improve water quality	10. To provide for sustainable sources of water supply	11. To avoid, reduce and manage flood risk	12. To conserve soil resources and quality	13. To minimise the production	14. To improve health of the population	15. To reduce crime and nuisance	16. To conserve natural and manmade resources
Objective 1- Deliver a housing growth strategy tailored to the needs and context of Bosbury village.	0	+	+	+	?	?	?	?	?	?	?	?	+	X	X	+
Objective 2- Sustain and improve local facilities for existing and new residents.	0	+	+	0	0	X	X	X	X	X	X	X	X	+	+	0
Objective 3. Strengthen and support economic activity	0	+	+	0	0	X	X	X	X	X	X	X	X	+	X	X
Objective 4- Only consider sensitive development which protects and enriches the landscape and built setting.	++	+	+	+	0	0	X	X	X	X	X	+	X	X	X	+

Objective 5. Promote environmental energy performance thereby reducing carbon emissions.	0	0	0	0	+	x	+	+	x	x	x	+	+	+	x	0
Objective 6. Prioritise local distinctiveness in every element of change and growth.	+	+	+	+	+	+	+	+	+	+	+	+	+	+	+	+
Objective 7. Protect green-space and the rural landscape.	++	+	+	x	+	+	+	x	x	x	+	+	x	+	+	+
Policy 1-Housing Growth	0	+	+	+	0	?	x	x	x	x	x	+	+	+	0	0
Policy 2-Local Character	+	++	+	++	x	x	+	+	x	x	++	+	+	0	0	+
Policy 3-The Local Economy	+	+	+	+	0	0	0	0	x	x	x	+	+	+	+	+
Policy 4-Local Facilities	x	+	+	+	0	0	0	0	x	x	x	x	+	+	+	+
Policy 5-Transport	+	+	+	x	+	++	+	+	0	x	x	0	+	+	x	+
Policy 6-Landscape and Environment.	++	+	+	+	0	x	x	x	x	x	+	+	x	+	x	+
Option 3-Settlement Boundary	+	+	+	?	?	?	0	0	0	0	-	0	+	+	+	0
Summary of effects of whole plan on each SEA Objective	+	+	+	+	+	+	+	+	+	+	+	+	+	+	+	+
Cumulative effects of whole plan (1 + 2 + 3...)	Overall the policies and the options for the Bosbury NDP have a positive impact towards the SEA baseline data. Overall all of the policies and objectives meet the Core Strategy requirements for the purposes of the SEA. Impact of flood risk towards new development needs to be mitigated to ensure there are no adverse effects on the built and natural environment. Policies and objectives strive to preserve and maintain natural and built historic environment as well as ensuring small scale appropriate development is developed this															

	may help mitigate the effect of development.
Commentary for significant cumulative effects	Potential development may create additional permanent traffic and construction traffic in the town affecting air quality , however as it is on a small scale over a lengthily time period it is unlikely to cause significant environmental damage. Policy 1 could provide further information regarding traffic impact during all phases of development. The chosen settlement boundary would benefit from a stronger justification and additional mitigation criteria to flood risk. Once this has been addressed the neighbourhood plan is unlikely to have any significant cumulative effects on the SEA objectives.

Appendix 5

Bosbury Neighbourhood Plan Options

Policy Options

P1-Option 1 -Development should be all in one site until area is exhausted
P1-Option 2 -Development should be spread in small pockets across numerous sites
P1-Option 3 -Respect the current village character
P1-Option 4 -Continue linear layout of village with open fields behind
P1-Option 5 -Add additional housing to meet local needs
P1-Option 6 -Be limited to 6 homes over 5 years
P1-Option 7 -Limited to 7-12 new homes over 5 years
P1-Option 8 -Limited to 13-16 homes over the next five years
P1-Option 9 -Not be limited but tightly control size of individual development
P1-Option 10 -Use brownfield sites as a priority
P2-Option 1 -Respect, and where possible. Enhance the natural, built and historic environment
P2-Option 2 -Maintain Bosbury village's strong and unique sense of history
P2-Option 3 -Not spoil the views into and out of the village and parish
P2-Option 4 -Be at a measured pace to enable infrastructure expansion
P2-Option 5 - Be in areas that are not prone to any types of flooding within Bosbury
P2-Option 6 -Be designed and constructed in a manner that will not worsen the flood risks of any other area within Bosbury
P2-Option 7 -Minimise impact on woodland, hedges, the river, brooks, verges and geological features.
P2-Option 8 -Ensure boundaries respect, reflect local tradition/ materials
P2-Option 9 -Include native Herefordshire species in landscaping
P2-Option 10 -Minimise unnecessary tree felling
P3-Option 1 -Support or provide business out in the countryside
P3-Option 2 -Encourage employment/ apprenticeships for local people
P4-Option 1 -Support or enhance existing services and facilities (including school, sports field, pub and community buildings)
P4-Option 2 -Development should show how it will contribute to increasing sustainability in the parish
P5-Option 1 -Improve footpaths/ bridleways/ pedestrian and cycle facilities
P6-Option 1 -Minimise visual and landscape impact
P6-Option 2 -Not harm or impact habitats and wildlife corridors
P6-Option 3 -Conform with landscape and nature conservation policies

Settlement Boundary Options

SB Option 1- Extend development at old court farm (6% voted for this option on consultation)
SB Option 2- Extend development North of Forge Bank (6% voted for this option on consultation)
SB Option 3- Extend development at Old Court Farm and the Vicarage (63% voted for this option on consultation)
SB Option 4- Extend development north of Forge Bank and the vicarage (25% voted for this option)

Appendix 6

Template C2: SEA Quality Assurance Checklist

Parish Council Name: Bosbury

Neighbourhood Development Plan Name: Bosbury Neighbourhood Plan

Date completed: April 2018

Objectives and context	Where are the points covered in Neighbourhood Development Plan SEA <i>(insert chapter, section, page references, as necessary)</i>
<ul style="list-style-type: none"> • The Neighbourhood Development Plan's purpose and objectives are made clear. • The Neighbourhood Area's environmental issues and constraints, including acknowledgement of those in the Local Plan (Core Strategy) SA, where relevant, and local environmental protection objectives, are considered in developing objectives and targets. • SEA objectives are clearly set out and linked to indicators and targets where appropriate. • Links with other locally related plans, programmes and policies are identified, explained and acknowledgement for those set out in the SA of the Local Plan (Core Strategy) is given, where relevant. • Conflicts that exist between SEA objectives; between SEA and Neighbourhood Development Plan objectives; and between SEA objectives and other local plan objectives are identified and described. 	<p>Chapter 1. 1-1.4,1.8.</p> <p>Chapter 2 Methodology, Chapter 3 and tables A2 and A3</p> <p>Chapter 3 paragraph 3.5-3.7</p> <p>Chapter 3, paragraph 3.1</p> <p>Chapter 3</p>
<p>Scoping</p> <ul style="list-style-type: none"> • Statutory Consultees are consulted in appropriate ways and at appropriate times on the content and scope of the Environmental Report. • The assessment focuses on significant issues. • Technical, procedural and other 	<p>Chapter 2, paragraphs 2.9-2.10</p> <p>Chapter 2 and chapter 4</p> <p>Chapter 2</p>

<p>difficulties encountered are discussed; assumptions and uncertainties are made explicit.</p> <ul style="list-style-type: none"> • Reasons are given for eliminating issues from further consideration. 	Chapter 2 and Chapter 4
<p>Alternatives</p> <ul style="list-style-type: none"> • Realistic alternatives are considered for key issues, and the reasons for choosing them are documented. • Alternatives include 'do minimum' and/or 'business as usual' scenarios wherever relevant. • The environmental effects (both adverse and beneficial) of each alternative are identified and compared. • Inconsistencies between the alternatives and other relevant local plans, programmes or policies are identified and explained. • Reasons are given for selection or elimination of alternatives. 	<p>Chapter 5</p> <p>Paragraph 5.4</p> <p>Chapter 5</p> <p>Chapter 5</p> <p>Chapter 5</p>
<p>Baseline information</p> <ul style="list-style-type: none"> • Relevant aspects of the current state of the local, neighbourhood area environment and their likely evolution without the Neighbourhood Development Plan are described. Acknowledgement to the information in the SA of the Local Plan (Core Strategy) is given, where relevant. • Environmental characteristics of the local, neighbourhood area, likely to be significantly affected are described, including areas wider than the physical boundary of the designated neighbourhood area, where it is likely to be affected by the Neighbourhood Development Plan. • Difficulties such as deficiencies in information or methods are explained. 	<p>Chapter 1, Chapter 5</p> <p>Initial screening report and Chapter 1</p> <p>Chapter 2</p>

<p>Prediction and evaluation of likely significant environmental effects</p> <ul style="list-style-type: none"> • Effects identified include the types listed in the Directive (biodiversity, population, human health, fauna, flora, soil, water, air, climate factors, material assets, cultural heritage and landscape), as relevant; and other local likely environmental effects are also covered, as appropriate. • Both positive and negative effects are considered, and the duration of effects (short, medium or long-term) is addressed. • Likely secondary, cumulative (growing in quantity and strength) and synergistic (acting together) effects are identified, where practicable. • Inter-relationships between effects are considered, where practicable. • The prediction and evaluation of effects makes use of relevant accepted standards, regulations, and thresholds (i.e. data gathered for the evidence base). • Methods used to evaluate the effects are described. 	<p>Tables A2, A3 and A4</p> <p>Tables B2 and B3</p> <p>Tables B4</p> <p>Chapter 6</p> <p>Chapter 6</p> <p>Chapter 2</p>
<p>Mitigation measures</p> <ul style="list-style-type: none"> • Measures envisaged to prevent, reduce and offset any significant adverse effects of implementing the Neighbourhood Development Plan are indicated. • Issues to be taken into account when determining planning applications or other projects, for example funding bids, are identified. 	<p>Chapter 6, paragraph 6.5</p> <p>Chapter 6</p>
<p>The Environmental Report</p> <ul style="list-style-type: none"> • Is clear and concise in its layout and presentation. • Uses simple, clear language and avoids or explains technical terms. • Uses maps and other illustrations, 	<p>-</p> <p>-</p> <p>-</p>

<p>where appropriate.</p> <ul style="list-style-type: none"> • Explains the methodology used. • Explains who was consulted and what methods of consultation were used. • Identifies sources of information, including expert judgement and matters of opinion. • Contains a non-technical summary covering the overall approach to the SEA, the objectives of the Neighbourhood Development Plan, the main options considered, and any changes to the Neighbourhood Development Plan resulting from the SEA. 	<p>Chapter 2</p> <p>Paragraph 2.9-2.10</p> <p>Paragraph 2.9-2.10</p> <p>Page 2 / Appendix 5 / Chapter 4/ Chapter 5 / Chapter 6</p>
<p>Consultation</p> <ul style="list-style-type: none"> • The SEA is consulted on as an integral part of the plan-making process of the Neighbourhood Development Plan. • Consultation Bodies and the public likely to be affected by, or having an interest in, the Neighbourhood Development Plan are consulted in ways and at times, which give them an early and effective opportunity within appropriate time frames to express their opinions on the draft Neighbourhood Development Plan and Environmental Report. 	<p>Paragraph 2.9-2.10</p> <p>Chapter 8</p>
<p>Decision-making and information on the decision</p> <ul style="list-style-type: none"> • The environmental report and the opinions of those consulted are taken into account in finalising and adopting the Neighbourhood Development Plan. • An explanation is given of how they have been taken into account. • Reasons are given for choosing the Neighbourhood Development Plan as adopted, in the light of other reasonable alternatives considered. 	<p>Chapter 8</p> <p>Following draft consultation</p> <p>Following draft consultation</p>

<p>Monitoring measures</p> <ul style="list-style-type: none"> • Measures proposed for monitoring the Neighbourhood Development Plan are clear, practicable and linked to the indicators and objectives used in the SEA. • Monitoring is used, where appropriate, during implementation of the Neighbourhood Development Plan to make good deficiencies in baseline information in the SEA. • Acknowledgement that monitoring enables unforeseen adverse effects to be identified at an early stage. (These effects may include predictions which prove to be incorrect.) And that • Proposals are made for action in response to significant adverse effects arising from the monitoring of the Neighbourhood Development Plan. 	<p>Chapter 7</p> <p>Chapter 7</p> <p>Chapter 7</p> <p>Chapter 7</p>
--	---

Appendix 7

Bosbury D1: SEA Consultation Feedback

This consultation feedback is **only** for comments received on the SEA of your Neighbourhood Development Plan

Parish Council Name: Bosbury Parish Council

Neighbourhood Development Plan Name: Bosbury Neighbourhood Plan

Details of consultation: Re submission *Regulation 16 consultation*

Consultation date: Regulation 16, 16 November 2016 to 11 January 2017

Consultation title: Regulation 16 Consultation

Response Date	Consultee	Summary of Comments	Response to Comments
No comments directly relating the SEA by consultees has been made by consultees.			

Appendix 8

Bosbury D3: Predict and evaluate the effects of the amended Neighbourhood Development Plan policies and sites

Parish Council Name: Bosbury

Neighbourhood Development Plan Name: Bosbury Neighbourhood Plan

Date completed: April 2018

Key:

++ Move towards significantly	+ Move towards Marginally	- - Move away significantly	- Move away marginally	0 Neutral	? Uncertain	N/A No relationship
-------------------------------	---------------------------	-----------------------------	------------------------	-----------	-------------	---------------------

Policy 1-Village Character (previously named Housing Growth)

SEA Objective	Assessment of effect (consider cumulative effects, significance of the effect and magnitude of the effect in terms of the three time periods)			Summary Explanation	Enhancement and mitigation opportunities
	Short term (1 – 5 years)	Medium term (6 – 10 years)	Long term (11 years +)		
To maintain and enhance nature conservation (biodiversity, flora and fauna)	0	0	0	Changes to this policy help make the policy more positive and flexible, this will make it easier to implement.	No. Criteria contained within this policy aims to safeguard the natural environment.
To maintain and enhance the quality of landscapes and townscapes	+	+	+	Changes to this policy help make the policy more positive and flexible, this will make it easier to implement.	None identified. Policy safeguards within the NDP and Core Strategy will help to alleviate impact caused from new development particularly policies LD1, LD2 and SD3.

To improve quality of surroundings	+	+	++	Changes to this policy help make the policy more positive and flexible, this will make it easier to implement.	None identified. Policy safeguards within the NDP and Core Strategy will help to alleviate impact caused from new development particularly policies LD1, LD2 and SD3.
To conserve and where appropriate enhance the historic environment and cultural heritage	+	+	+	Changes to this policy help make the policy more positive and flexible, this will make it easier to implement.	None identified. Policy safeguards within the NDP and Core Strategy will help to alleviate impact caused from new development particularly policies LD1, LD2 and SD3.
To improve air quality	0	0	0	Changes to this policy help make the policy more positive and flexible, this will make it easier to implement.	None identified. Policy safeguards within the NDP and Core Strategy will help to alleviate impact caused from new development particularly policies LD1, LD2 and SD3.
To reduce the effect of traffic on the environment	+	+	+	Changes to this policy help make the policy more positive and flexible, this will make it easier to implement.	None identified. Policy safeguards within the NDP and Core Strategy will help to alleviate impact caused from new development particularly policies LD1, LD2 and SD3.
To reduce contributions to climate change	X	X	X	-	-
To reduce vulnerability to climate change	X	X	X	--	-
To improve water quality	X	X	X	-	-
To provide for sustainable sources of water supply	X	X	X	-	-

To avoid, reduce and manage flood risk	X	X	X	-	-
To conserve soil resources and quality	+	+	+	Changes to this policy help make the policy more positive and flexible, this will make it easier to implement.	None identified. Policy safeguards within the NDP and Core Strategy will help to alleviate impact caused from new development particularly policies LD1, LD2 and SD3.
To minimise the production of waste	+	+	+	Changes to this policy help make the policy more positive and flexible, this will make it easier to implement.	None identified. Policy safeguards within the NDP and Core Strategy will help to alleviate impact caused from new development particularly policies LD1, LD2 and SD3.
To improve health of the population	+	+	+	Changes to this policy help make the policy more positive and flexible, this will make it easier to implement.	None identified. Policy safeguards within the NDP and Core Strategy will help to alleviate impact caused from new development particularly policies LD1, LD2 and SD3.
To reduce crime and nuisance	0	0	0	Changes to this policy help make the policy more positive and flexible, this will make it easier to implement.	None identified. Policy safeguards within the NDP and Core Strategy will help to alleviate impact caused from new development particularly policies LD1, LD2 and SD3.
To conserve natural and manmade resources	0	0	0	Changes to this policy help make the policy more positive and flexible, this will make it easier to implement.	None identified. Policy safeguards within the NDP and Core Strategy will help to alleviate impact caused from new development particularly policies LD1, LD2 and SD3.
Overall commentary and any cumulative effects	+	+	+	Changes to this policy help make the policy more positive and flexible, this will make it easier to	None identified. Policy safeguards within the NDP and Core Strategy will help to alleviate impact caused from new

				implement.	development particularly policies LD1, LD2 and SD3.
Overall commentary and any cumulative effects	Changes to this policy help move the policy closer to the SEA baseline and help the policy confirm to the policies set out in the Local Plan. This Policy is not over and above the Core Strategy in terms of SEA objectives. Overall the changes will help make the policy more positive and flexible, this will make it easier to implement.				

Policy 3-The Local Economy

SEA Objective	Assessment of effect (consider cumulative effects, significance of the effect and magnitude of the effect in terms of the three time periods)			Summary Explanation	Enhancement and mitigation opportunities
	Short term (1 – 5 years)	Medium term (6 – 10 years)	Long term (11 years +)		
To maintain and enhance nature conservation (biodiversity, flora and fauna)	+	+	+	Restrictions to this policy have been removed. Changes to this policy help make the policy more positive and flexible, this will make it easier to implement.	Policy safeguards within the NDP and Core Strategy will help to alleviate impact caused from new development particularly policies LD1, LD2 and SD3.
To maintain and enhance the quality of landscapes and townscapes	+	+	+	Restrictions to this policy have been removed. Changes to this policy help make the policy more positive and flexible, this will make it easier to implement.	None identified. Policy safeguards within the NDP and Core Strategy will help to alleviate impact caused from new development particularly policies LD1, LD2 and LD4.
To improve quality of surroundings	+	+	+	Restrictions to this policy have been removed. Changes to this policy help make the policy more positive and flexible, this will make it easier to implement.	None identified. Policy safeguards within the NDP and Core Strategy will help to alleviate impact caused from new development particularly policies LD1, LD2 and LD4.

To conserve and where appropriate enhance the historic environment and cultural heritage	+	+	+	Restrictions to this policy have been removed. Changes to this policy help make the policy more positive and flexible, this will make it easier to implement.	None identified. Policy safeguards within the NDP and Core Strategy will help to alleviate impact caused from new development particularly policies LD1, LD2 and LD4.
To improve air quality	0	0	0	Restrictions to this policy have been removed. Changes to this policy help make the policy more positive and flexible, this will make it easier to implement.	None identified. Policy safeguards within the NDP and Core Strategy will help to alleviate impact caused from new development particularly policies LD1, LD2 and SD3.
To reduce the effect of traffic on the environment	0	0	0	Restrictions to this policy have been removed. Changes to this policy help make the policy more positive and flexible, this will make it easier to implement.	None identified. Policy safeguards within the NDP and Core Strategy will help to alleviate impact caused from new development particularly policies LD1, LD2 and MT1.
To reduce contributions to climate change	0	0	0	Restrictions to this policy have been removed. Changes to this policy help make the policy more positive and flexible, this will make it easier to implement.	None identified. Policy safeguards within the NDP and Core Strategy will help to alleviate impact caused from new development particularly policies LD1, LD2, SS6, SS7 and SD3.
To reduce vulnerability to climate change	0	0	0	Restrictions to this policy have been removed. Changes to this policy help make the policy more positive and flexible, this will make it easier to implement.	None identified. Policy safeguards within the NDP and Core Strategy will help to alleviate impact caused from new development particularly policies LD1, LD2, SS6, SS7 and SD3.
To improve water quality	X	X	X	-	-
To provide for sustainable sources of water supply	X	X	X	-	-

To avoid, reduce and manage flood risk	X	X	X	-	-
To conserve soil resources and quality	+	+	+	Restrictions to this policy have been removed. Changes to this policy help make the policy more positive and flexible, this will make it easier to implement.	None identified. Policy safeguards within the NDP and Core Strategy will help to alleviate impact caused from new development particularly policies LD1, LD2 and SD3.
To minimise the production of waste	+	+	+	Restrictions to this policy have been removed. Changes to this policy help make the policy more positive and flexible, this will make it easier to implement.	None identified. Policy safeguards within the NDP and Core Strategy will help to alleviate impact caused from new development particularly policies LD1, LD2 and SD3.
To improve health of the population	+	+	+	Restrictions to this policy have been removed. Changes to this policy help make the policy more positive and flexible, this will make it easier to implement.	None identified. Policy safeguards within the NDP and Core Strategy will help to alleviate impact caused from new development particularly policies LD1, LD2 and SD3.
To reduce crime and nuisance	+	+	+	Restrictions to this policy have been removed. Changes to this policy help make the policy more positive and flexible, this will make it easier to implement.	None identified. Policy safeguards within the NDP and Core Strategy will help to alleviate impact caused from new development particularly policies LD1, LD2 and SD3.
To conserve natural and manmade resources	+	+	+	Restrictions to this policy have been removed. Changes to this policy help make the policy more positive and flexible, this will make it easier to implement.	None identified. Policy safeguards within the NDP and Core Strategy will help to alleviate impact caused from new development particularly policies LD1, LD2 and SD3.
Overall commentary and any cumulative effects	+	+	+	Changes to this policy help make the policy more positive and flexible, this will make it easier to	N/A

				implement.	
Overall commentary and any cumulative effects	Changes to this policy help move the policy closer to the SEA baseline and help the policy confirm to the policies set out in the Local Plan. This Policy is not over and above the Core Strategy in terms of SEA objectives. Overall this will help make the policy more positive and flexible, this will make it easier to implement. Restrictions to this policy have been removed and help the policy conform to the Core Strategy in a clearer way.				

Policy 5-Transport

SEA Objective	Assessment of effect (consider cumulative effects, significance of the effect and magnitude of the effect in terms of the three time periods)			Summary Explanation	Enhancement and mitigation opportunities
	Short term (1 – 5 years)	Medium term (6 – 10 years)	Long term (11 years +)		
To maintain and enhance nature conservation (biodiversity, flora and fauna)	+	+	+	Changes to this policy help make the policy have removed the un implementable parts and made the policy more positive and further promotes highway safety and sustainable transport infrastructure.	Policy safeguards within the NDP and Core Strategy will help to alleviate impact caused from new development particularly policies LD1, LD2 and SD3.
To maintain and enhance the quality of landscapes and townscapes	+	+	+	Changes to this policy help make the policy have removed the un implementable parts and made the policy more positive and further promotes highway safety and sustainable transport infrastructure.	None identified. Policy safeguards within the NDP and Core Strategy will help to alleviate impact caused from new development particularly policies LD1, LD2 and LD4.
To improve quality of surroundings	+	+	+	Changes to this policy help make the policy have removed the un implementable parts and made the policy more positive and further	None identified. Policy safeguards within the NDP and Core Strategy will help to alleviate impact caused from new development particularly policies LD1,

				promotes highway safety and sustainable transport infrastructure.	LD2 and LD4.
To conserve and where appropriate enhance the historic environment and cultural heritage	X	X	X	-	
To improve air quality	+	+	++	Changes to this policy help make the policy have removed the un implementable parts and made the policy more positive and further promotes highway safety and sustainable transport infrastructure.	None identified. Policy safeguards within the NDP and Core Strategy will help to alleviate impact caused from new development particularly policies LD1, LD2 and SD3.
To reduce the effect of traffic on the environment	++	++	++	Changes to this policy help make the policy have removed the un implementable parts and made the policy more positive and further promotes highway safety and sustainable transport infrastructure.	None identified. Policy safeguards within the NDP and Core Strategy will help to alleviate impact caused from new development particularly policies LD1, LD2 and MT1.
To reduce contributions to climate change	+	+	+	Changes to this policy help make the policy have removed the un implementable parts and made the policy more positive and further promotes highway safety and sustainable transport infrastructure.	None identified. Policy safeguards within the NDP and Core Strategy will help to alleviate impact caused from new development particularly policies LD1, LD2, SS6,SS7 and SD3.
To reduce vulnerability to climate change	+	+	+	Changes to this policy help make the policy have removed the un implementable parts and made the policy more positive and further promotes highway safety and sustainable transport infrastructure.	None identified. Policy safeguards within the NDP and Core Strategy will help to alleviate impact caused from new development particularly policies LD1, LD2, SS6, SS7 and SD3.

To improve water quality	0	0	0	Changes to this policy help make the policy have removed the un implementable parts and made the policy more positive and further promotes highway safety and sustainable transport infrastructure.	None identified. Policy safeguards within the NDP and Core Strategy will help to alleviate impact caused from new development particularly policies LD1, LD2, SD3 and SD4.
To provide for sustainable sources of water supply	X	X	X	-	-
To avoid, reduce and manage flood risk	X	X	X	-	-
To conserve soil resources and quality	0	0	0	Changes to this policy help make the policy have removed the un implementable parts and made the policy more positive and further promotes highway safety and sustainable transport infrastructure.	None identified. Policy safeguards within the NDP and Core Strategy will help to alleviate impact caused from new development particularly policies LD1, LD2 and SD3.
To minimise the production of waste	0	+	+	Changes to this policy help make the policy have removed the un implementable parts and made the policy more positive and further promotes highway safety and sustainable transport infrastructure.	None identified. Policy safeguards within the NDP and Core Strategy will help to alleviate impact caused from new development particularly policies LD1, LD2 and SD3.
To improve health of the population	+	+	+	Changes to this policy help make the policy have removed the un implementable parts and made the policy more positive and further promotes highway safety and sustainable transport infrastructure.	None identified. Policy safeguards within the NDP and Core Strategy will help to alleviate impact caused from new development particularly policies LD1, LD2 and SD3.
To reduce crime and nuisance	X	X	X	-	-

To conserve natural and manmade resources	+	+	+	Changes to this policy help make the policy have removed the un implementable parts and made the policy more positive and further promotes highway safety and sustainable transport infrastructure.	None identified. Policy safeguards within the NDP and Core Strategy will help to alleviate impact caused from new development particularly policies LD1, LD2 and SD3.
Overall commentary and any cumulative effects	+	+	+	Changes to this policy help make the policy have removed the un implementable parts and made the policy more positive and further promotes highway safety and sustainable transport infrastructure.	N/A
Overall commentary and any cumulative effects	Changes to this policy help make the policy have removed the un implementable parts and made the policy more positive and further promotes highway safety and sustainable transport infrastructure. The changes to this policy help move the policy closer to the SEA baseline and help the policy confirm to the policies set out in the Local Plan. This Policy is not over and above the Core Strategy in terms of SEA objectives.				

Policy 6- Biodiversity (previously named Landscape and Environment)

SEA Objective	Assessment of effect (consider cumulative effects, significance of the effect and magnitude of the effect in terms of the three time periods)			Summary Explanation	Enhancement and mitigation opportunities
	Short term (1 – 5 years)	Medium term (6 – 10 years)	Long term (11 years +)		
To maintain and enhance nature conservation (biodiversity, flora and fauna)	++	++	++	Changes to this policy help make the policy more positive and specifically focus on biodiversity in the parish. Overall this helps move this policy closer to the sea baseline.	No. Criteria contained within this policy aims to safeguard the natural environment. The policy itself acts as a mitigation measure to protect landscape and environment of the parish.

To maintain and enhance the quality of landscapes and townscapes	+	+	++	Changes to this policy help make the policy more positive and specifically focus on biodiversity in the parish. Overall this helps move this policy closer to the sea baseline.	No. Criteria contained within this policy aims to safeguard the natural environment. The policy itself acts as a mitigation measure to protect landscape and environment of the parish.
To improve quality of surroundings	+	+	+	Changes to this policy help make the policy more positive and specifically focus on biodiversity in the parish. Overall this helps move this policy closer to the sea baseline.	No. Criteria contained within this policy aims to safeguard the natural environment. The policy itself acts as a mitigation measure to protect landscape and environment of the parish.
To conserve and where appropriate enhance the historic environment and cultural heritage	+	+	+	Changes to this policy help make the policy more positive and specifically focus on biodiversity in the parish. Overall this helps move this policy closer to the sea baseline.	No. Criteria contained within this policy aims to safeguard the natural environment. The policy itself acts as a mitigation measure to protect landscape and environment of the parish.
To improve air quality	0	0	0	Changes to this policy help make the policy more positive and specifically focus on biodiversity in the parish. Overall this helps move this policy closer to the sea baseline.	No. Criteria contained within this policy aims to safeguard the natural environment. The policy itself acts as a mitigation measure to protect landscape and environment of the parish.
To reduce the effect of traffic on the environment	X	X	X	-	-
To reduce contributions to climate change	X	X	X	-	-
To reduce vulnerability to climate change	X	X	X	-	-

To improve water quality	X	X	X	-	-
To provide for sustainable sources of water supply	X	X	X	-	-
To avoid, reduce and manage flood risk	+	+	+	Changes to this policy help make the policy more positive and specifically focus on biodiversity in the parish. Overall this helps move this policy closer to the sea baseline.	No. Criteria contained within this policy aims to safeguard the natural environment. The policy itself acts as a mitigation measure to protect landscape and environment of the parish.
To conserve soil resources and quality	+	+	+	Changes to this policy help make the policy more positive and specifically focus on biodiversity in the parish. Overall this helps move this policy closer to the sea baseline.	No. Criteria contained within this policy aims to safeguard the natural environment. The policy itself acts as a mitigation measure to protect landscape and environment of the parish.
To minimise the production of waste	X	X	X	-	-
To improve health of the population	0	+	+	Changes to this policy help make the policy more positive and specifically focus on biodiversity in the parish. Overall this helps move this policy closer to the sea baseline.	No. Criteria contained within this policy aims to safeguard the natural environment. The policy itself acts as a mitigation measure to protect landscape and environment of the parish.
To reduce crime and nuisance	X	X	X	-	-
To conserve natural and manmade resources	+	+	+	Changes to this policy help make the policy more positive and specifically focus on biodiversity in the parish. Overall this helps move	No. Criteria contained within this policy aims to safeguard the natural environment. The policy itself acts as a mitigation measure to protect landscape

				this policy closer to the sea baseline.	and environment of the parish.
Overall commentary and any cumulative effects	+	+	+	Changes to this policy help make the policy more positive and specifically focus on biodiversity in the parish. Overall this helps move this policy closer to the sea baseline.	No. Criteria contained within this policy aims to safeguard the natural environment. The policy itself acts as a mitigation measure to protect landscape and environment of the parish.
Overall commentary and any cumulative effects	Changes to this policy help move the policy closer to the SEA baseline and help the policy confirm to the policies set out in the Local Plan. This Policy is not over and above the Core Strategy in terms of SEA objectives.				